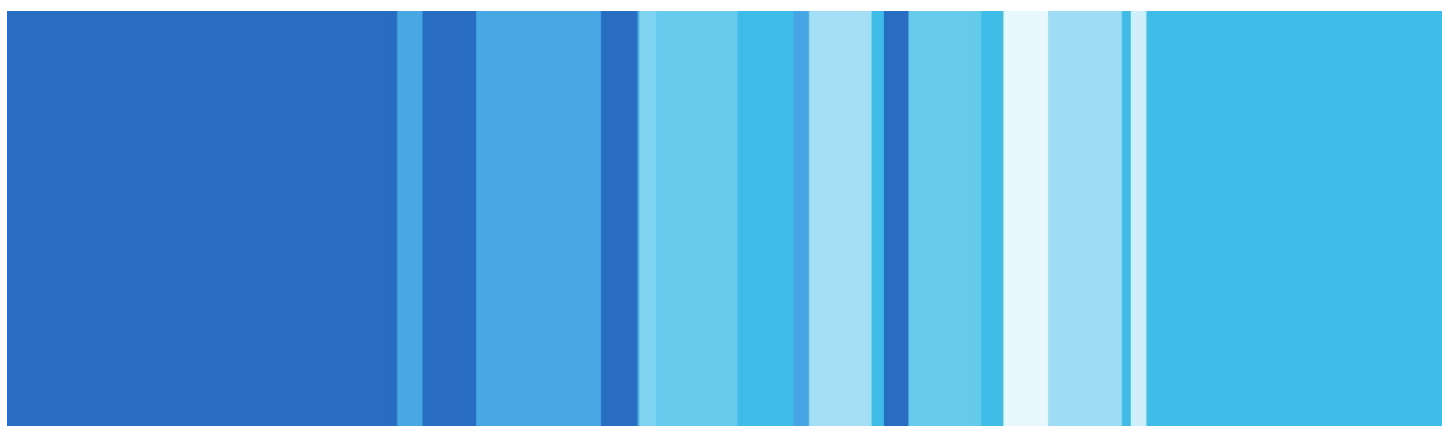


MINNESOTA  
OFFICE OF  
HIGHER  
EDUCATION

*reach higher*

January 2013



# Minnesota Tuition Reciprocity: 2013 Annual Report



## Authors

### Jack Rayburn

Manager, Minnesota College Savings Plan  
Tel: 651-259-3967  
jack.rayburn@state.mn.us

## About the Minnesota Office of Higher Education

The Minnesota Office of Higher Education is a cabinet-level state agency providing students with financial aid programs and information to help them gain access to postsecondary education. The agency also serves as the state's clearinghouse for data, research and analysis on postsecondary enrollment, financial aid, finance and trends.

The Minnesota State Grant Program is the largest financial aid program administered by the Office of Higher Education, awarding up to \$150 million in need-based grants to Minnesota residents attending eligible colleges, universities and career schools in Minnesota. The agency oversees other state scholarship programs, tuition reciprocity programs, a student loan program, Minnesota's 529 College Savings Plan, licensing and early college awareness programs for youth.

## Minnesota Office of Higher Education

1450 Energy Park Drive, Suite 350  
Saint Paul, MN 55108-5227

Tel: 651.642.0567 or 800.657.3866

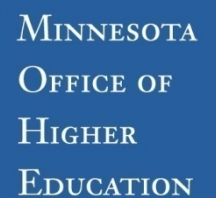
TTY Relay: 800.627.3529

Fax: 651.642.0675

E-mail: [info.ohe@state.mn.us](mailto:info.ohe@state.mn.us)

[www.getreadyforcollege.org](http://www.getreadyforcollege.org)

[www.ohe.state.mn.us](http://www.ohe.state.mn.us)



MINNESOTA  
OFFICE OF  
HIGHER  
EDUCATION

*reach higher*

# Table of Contents

---

|   |    |
|---|----|
| Table of Contents .....   | 1  |
| Introduction .....  | 3  |
| Participating Jurisdictions .....   | 3  |
| Statutory Authority and Responsibility for Tuition Reciprocity .....                          | 4  |
| Statutory Purpose of Tuition Reciprocity .....  | 5  |
| Operationalizing the Statutory Purpose of Tuition Reciprocity .....                           | 5  |
| Administering Tuition Reciprocity .....   | 5  |
| Tuition Reciprocity Participation .....   | 6  |
| Tuition Reciprocity Enrollment Patterns .....   | 8  |
| High School Graduates .....   | 8  |
| State Population .....  | 10 |
| Proximity of Public Four-Year Institutions to State Population Centers and State Borders..... | 11 |
| Financing Tuition Reciprocity .....   | 14 |
| Tuition Reciprocity Tuition Rate Setting .....  | 19 |
| Tuition Reciprocity Outcomes .....  | 23 |
| Appendix A: Minnesota-North Dakota Interstate Payment History .....                           | 27 |
| Attachment A: Tuition Reciprocity Enrollments .....   | 30 |
| Attachment B: Tuition Reciprocity Interstate Payments .....                                   | 40 |
| Attachment C: Tuition Reciprocity Tuition Rates .....   | 46 |
| Attachment D: Tuition Reciprocity Graduates .....   | 56 |



# Introduction

---

Minnesota's interstate tuition reciprocity agreements expand market choices and enrollment opportunities for state residents. Over 28,000 Minnesota residents enrolled in reciprocity institutions in Wisconsin, North Dakota, South Dakota, Iowa and Manitoba in fall 2011. Nearly 16,500 residents of Wisconsin, North Dakota, South Dakota, Iowa and Manitoba enrolled in Minnesota public postsecondary education institutions in fall 2011. Minnesota's tuition reciprocity agreements also expand the student market for postsecondary institutions. Institutions can cast a wider recruitment net at competitive prices to attract the type of student they desire.

The body of this paper describes Minnesota's tuition reciprocity agreements, starting with the genesis of reciprocity, followed by the statutory basis for, student participation in and the administration and financing of reciprocity. The paper concludes with data on the outcomes of 40 years of Minnesota's tuition reciprocity programs.

Minnesota Statutes 136A.08, Subd. 7 requires the Minnesota Office of Higher Education to prepare an annual tuition reciprocity report for the Minnesota Legislature. Specifically, the agency is required to report the following tuition reciprocity data.

- Participation
- Interstate Payments
- Tuition Rates
- Reciprocity Graduates from Minnesota Public Institutions

Tuition reciprocity enrollments, interstate payments, tuition rates and reciprocity graduates from Minnesota public postsecondary education institution data tables are provided in Attachments A, B, C and D respectively.

## Participating Jurisdictions

A limited Minnesota-Wisconsin statewide tuition reciprocity agreement began in the late 1960s. Statewide tuition reciprocity emerged from a Minnesota and Wisconsin Governors' initiative in 1973.<sup>1</sup>

The goals in initiating tuition reciprocity were

- to avoid postsecondary institution and program duplication and
- to expand postsecondary education opportunities for state residents.

State and provincial-wide agreements with other states and the Canadian province of Manitoba followed for the state of Minnesota, as identified in Table 1.

---

<sup>1</sup> See Associate Press, *Common Market, New Plan Eliminates Out-Of-State Tuition Fees*, September 14, 1973. (<http://news.google.com/newspapers?nid=1346&dat=19730914&id=xIROAAAIBAJ&sjid=cfoDAAAIBAJ&pg=7067,3779501>)

**Table 1**

| Reciprocity Jurisdiction | Date of Inception |
|--------------------------|-------------------|
| Wisconsin                | 1969              |
| North Dakota             | 1975              |
| South Dakota             | 1978              |
| Manitoba                 | 1989              |

Minnesota’s tuition reciprocity agreements include public postsecondary education institutions in the participating jurisdictions. All undergraduate and graduate programs of study are available to reciprocity students. Professional programs may or may not be included in the agreements.<sup>2</sup>

The state of Minnesota has had a limited reciprocity agreement between Iowa Lakes Community College and Minnesota West Community and Technical College since 1979. Periodically, the Minnesota Office of Higher Education has asked the Iowa Board of Regents to consider expanding tuition reciprocity to include all public institutions in Minnesota and Iowa. The Iowa Board of Regents has not been interested in establishing state-wide tuition reciprocity with Minnesota.<sup>3</sup>

## **Statutory Authority and Responsibility for Tuition Reciprocity**

Minnesota Statutes 136A.08 Subd.2 authorizes the Minnesota Office of Higher Education to enter into tuition reciprocity agreements in consultation with the Commissioner of Minnesota Management and Budget and each affected Minnesota public postsecondary governing board. Tuition reciprocity agreements are not valid until approved by the University of Minnesota Board of Regents and the Minnesota State Colleges and Universities’ Board of Trustees as provided for in 2012 Minnesota Statutes 136A.08, Subd. 6.

- The agreements are ongoing and reviewed annually by the Minnesota Office of Higher Education.
- The agreements exist as long as the participating jurisdictions deem them to be beneficial.

---

<sup>2</sup> Minnesota’s statewide tuition reciprocity agreement with Wisconsin does not include Wisconsin technical colleges. Wisconsin technical colleges are operated at the local rather than the state level. Minnesota residents can attend Wisconsin technical colleges and pay the Wisconsin technical college Wisconsin resident tuition rate.

<sup>3</sup> For further information see: Erin Jordan and Lisa Ross: *Colleges look to ‘steal’ students from outside to further growth*, Des Moines Register, September 7, 2006, Frank Santiago: *Out-of-state colleges lure few*, Des Moines Register, February 8, 2001, and *In-state tuition, out of state*, Chicago Tribune, November 19, 2007. A Minnesota resident is to be considered as an Iowa resident when applying for admission to Iowa Lakes Community College. A resident of the Iowa Lakes Community College attendance district is to be considered as a Minnesota resident when applying to Minnesota West Community and Technical College. Reciprocity students attending the participating institutions pay the resident tuition rate at the institution attended.

## **Statutory Purpose of Tuition Reciprocity**

The purpose of tuition reciprocity is “. . . the mutual improvement of educational advantages for residents of this state and others states or provinces with whom agreements are made,” as specified in 2012 Minnesota Statutes 136A.08 Subd. 2.

No other purpose is identified in Minnesota Statute.

## **Operationalizing the Statutory Purpose of Tuition Reciprocity**

The mutual improvement of educational advantages for Minnesota residents and other states or provinces with whom agreements are made has been administratively operationalized by

- removing undergraduate and graduate non-resident public postsecondary institution admissions barriers and
- removing undergraduate and graduate non-resident public postsecondary institution tuition barriers.

State of Minnesota residents may attend public postsecondary education institutions in neighboring jurisdictions at a tuition rate they would pay at a comparable home state institution. Under the agreements, a Minnesota resident is to be considered for admission like a Wisconsin, North Dakota, South Dakota or Manitoba resident when applying to eligible public postsecondary institutions in those jurisdictions. Similarly, residents of those jurisdictions are considered as residents of Minnesota when applying for admission to eligible Minnesota public postsecondary education institutions.<sup>4</sup>

## **Administering Tuition Reciprocity**

Staff of the Minnesota Office of Higher Education administers Minnesota’s tuition reciprocity agreements in consultation with staff of the Minnesota State Colleges and Universities, the University of Minnesota, the Minnesota Governor’s Office and the Minnesota Legislature. In addition, staff of the Minnesota Office of Higher Education works with staff at comparable agencies in jurisdictions with which Minnesota has a tuition reciprocity agreement.

Tuition reciprocity agreement language is broad.

- Details regarding reciprocity tuition rates and program operations are contained in annual administrative memoranda.
- Annual administrative memoranda documents are signed by the executive directors of higher education boards or agencies in each state before the start of the academic year and disseminated to public postsecondary education campuses.

---

<sup>4</sup> Removal of nonresident admissions barriers and nonresident tuition barriers, along with interstate payments, differentiates Minnesota’s state-wide tuition reciprocity agreements from student exchange programs, such as the Midwest Higher Education Compact’s Student Exchange Program, that sell excess capacity in a limited number of programs and public institutions at a discounted price.

Students apply for reciprocity through the higher education agency in their state of residence, although Minnesota's agreements with the states of South Dakota and North Dakota allow some Minnesota residents to be approved for reciprocity on the campus they attend. After students are approved for reciprocity, each state's higher education agency generates a file of approved resident students for campuses in the neighboring reciprocity state so that student tuition and fee bills can be adjusted to reflect the appropriate reciprocity tuition rate. At the end of each term, each state agency collects term enrollment data for resident students from campuses in the neighboring state. The data are used in interstate reciprocity payment calculations, where applicable, at the end of each academic year.

## **Tuition Reciprocity Participation**

Nearly 45,000 students from Minnesota, Wisconsin, North Dakota, South Dakota, Iowa and Manitoba participated in tuition reciprocity in fall 2011.<sup>5</sup>

- Over 28,000 Minnesota resident reciprocity students enrolled in public postsecondary education reciprocity institutions in Wisconsin, North Dakota, South Dakota, Iowa and Manitoba.
- Roughly 16,500 reciprocity student residents of Wisconsin, North Dakota, South Dakota, Iowa and Manitoba enrolled in Minnesota public postsecondary education institutions.
- Nearly 95 percent of reciprocity students were undergraduates, the remaining 5 percent were graduate and/or professional students.

Minnesota's tuition reciprocity agreements with Manitoba and Iowa Lakes Community College enroll relatively few students each year. In fall 2011, 233 Minnesota resident reciprocity students were enrolled in the five campuses of Iowa Lakes Community College and 82 Iowa resident reciprocity students were enrolled in the five campuses of Minnesota West Community and Technical College. In fall 2011, 42 Minnesota resident reciprocity students were enrolled in Manitoba public postsecondary education institutions and 47 Manitoba resident reciprocity students were enrolled in Minnesota public postsecondary education institutions.

Over 99 percent of reciprocity students were enrolled under Minnesota's agreements with Wisconsin, North Dakota and South Dakota. Fall 2011 headcount enrollments under those agreements are shown on Figure 1.

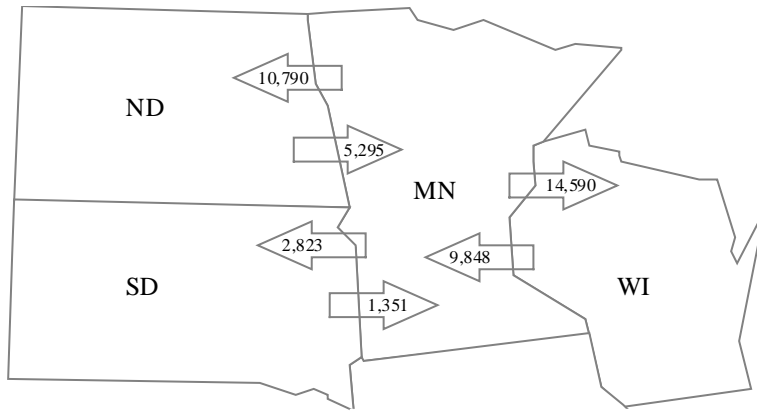
---

<sup>5</sup> See Attachment A for complete fall 2011 and historical tuition reciprocity enrollment data.



**Figure 1**

**Minnesota-Wisconsin-North Dakota-South Dakota Tuition Reciprocity Fall 2011 Headcount Enrollment**

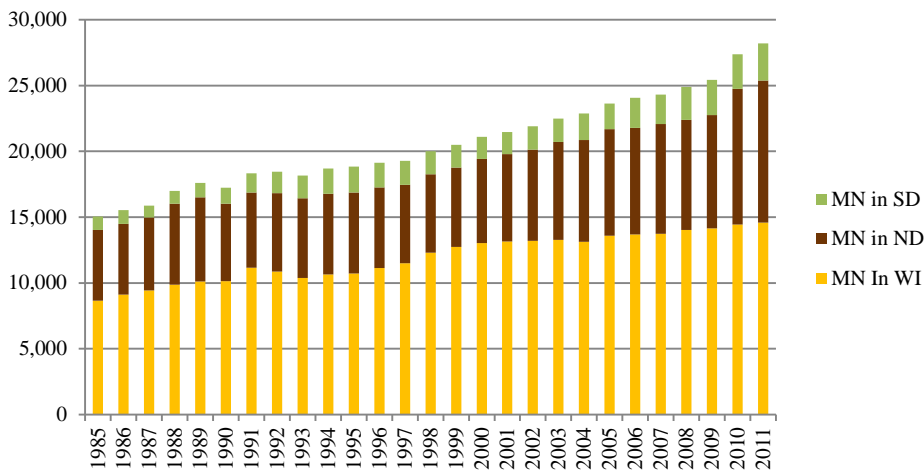


Tuition reciprocity fall headcount enrollments, from fall 1985 to fall 2011, in Minnesota’s agreements with Wisconsin, North Dakota and South Dakota are shown in the following figures.

Minnesota residents have increasingly participated in tuition reciprocity from fall 1985 to fall 2011, as shown in Figure 2.

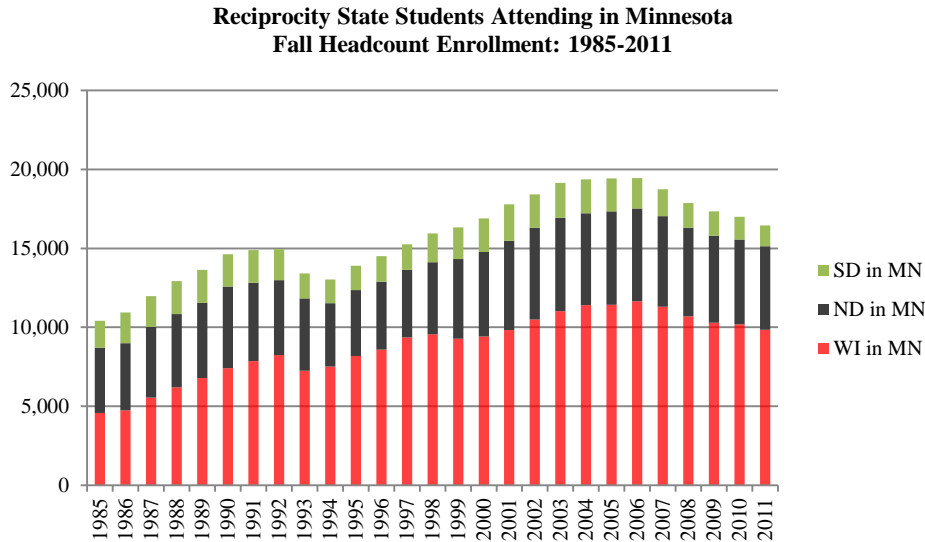
**Figure 2:**

**Minnesota Reciprocity Students Attending in Reciprocity States  
Fall Headcount Enrollment: 1985-2011**



Reciprocity participation by residents of Wisconsin, North Dakota and South Dakota has varied from year-to-year; increasing between fall 1985 and 1992 and again from 1994 to 2006, but incrementally decreasing since, as shown in Figure 3.

**Figure 3:**



## Tuition Reciprocity Enrollment Patterns

Tuition reciprocity enrollment patterns are a reflection of the following factors.

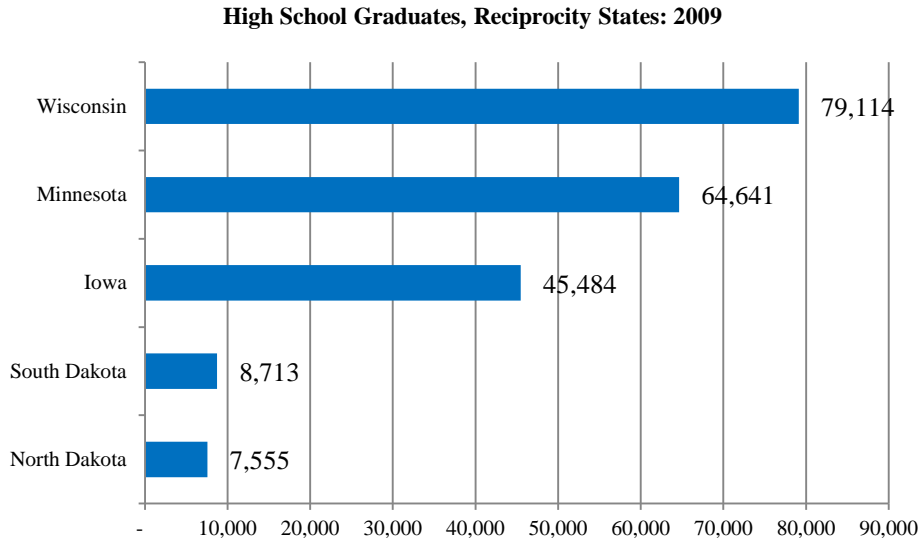
- The number of high school graduates in each participating state.
- The distribution of the population in the Upper Midwest.
- The proximity of public four-year reciprocity institutions to population centers and state borders.

**High School Graduates:** The states of Wisconsin and Minnesota have had the most high school graduates among the reciprocity states. State high school graduate numbers from 2009 are the most recent state-level data and are shown for the reciprocity states in Figure 4.<sup>6</sup>

- Minnesota and Wisconsin each had over 60,000 high school graduates in 2009.
- North and South Dakota each had fewer than 9,000 in 2009.

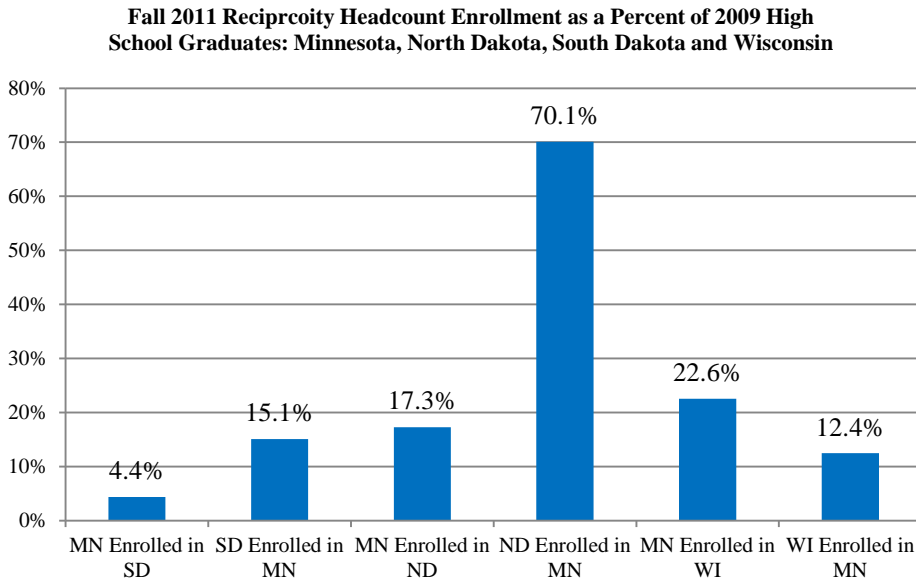
<sup>6</sup> Western Interstate Commission for Higher Education, *Knocking at the College Door, Projections of High School Graduates*, December 2012 (<http://www.wiche.edu/knocking-8th>).

**Figure 4:**



More Minnesota and Wisconsin residents participated in tuition reciprocity than residents of South and North Dakota. Nevertheless, given South Dakota and North Dakota's lower high school graduation numbers, South and North Dakota residents participated in reciprocity proportionately more than Wisconsin residents and North Dakota residents participated in reciprocity proportionately more than Minnesota residents, as shown on Figure 5.

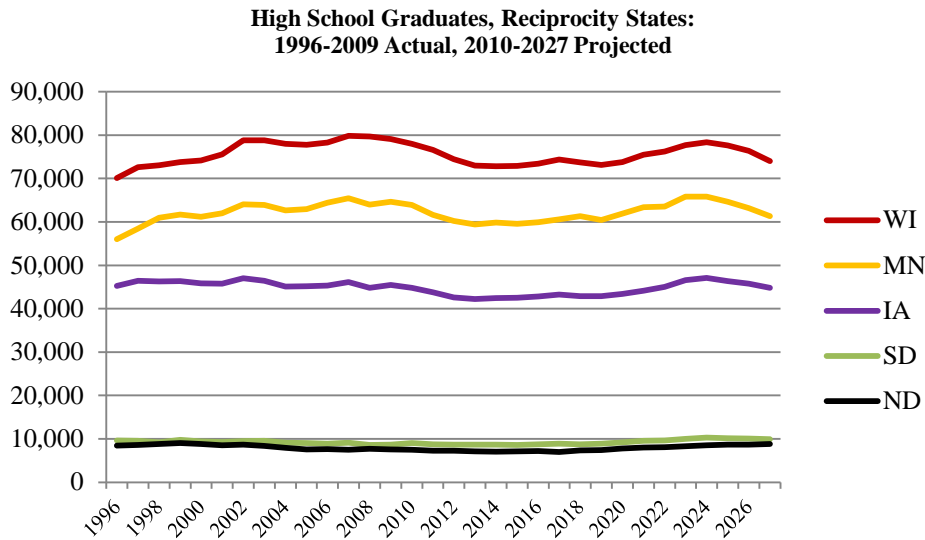
**Figure 5**



Western Interstate Commission for Higher Education projections of high school graduates by state show the numbers of high school graduates are projected to slightly decrease in the reciprocity states after

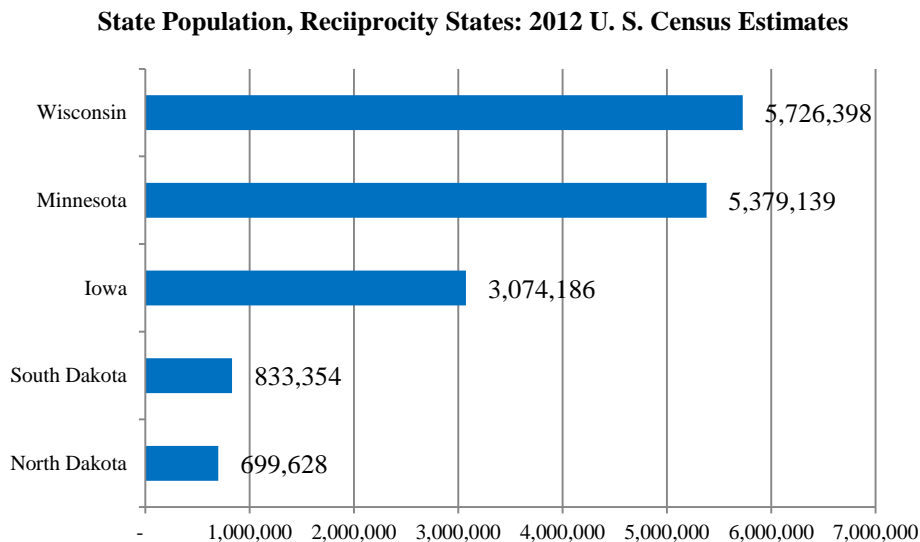
2009, pick up in a decade, but trail off again in about 2024. The relative ranking among the reciprocity states is projected to remain the same, however, as shown in Figure 6.<sup>7</sup>

**Figure 6**



**State Population:** As with high school graduates, the states of Wisconsin and Minnesota have the most residents and South and North Dakota the fewest among the Upper Midwest states. United States Census 2012 population estimates for the reciprocity states are shown in Figure 7.

**Figure 7**



<sup>7</sup> Western Interstate Commission for Higher Education, *Knocking at the College Door, Projections of High School Graduates*, December 2012 (<http://www.wiche.edu/knocking-8th>).

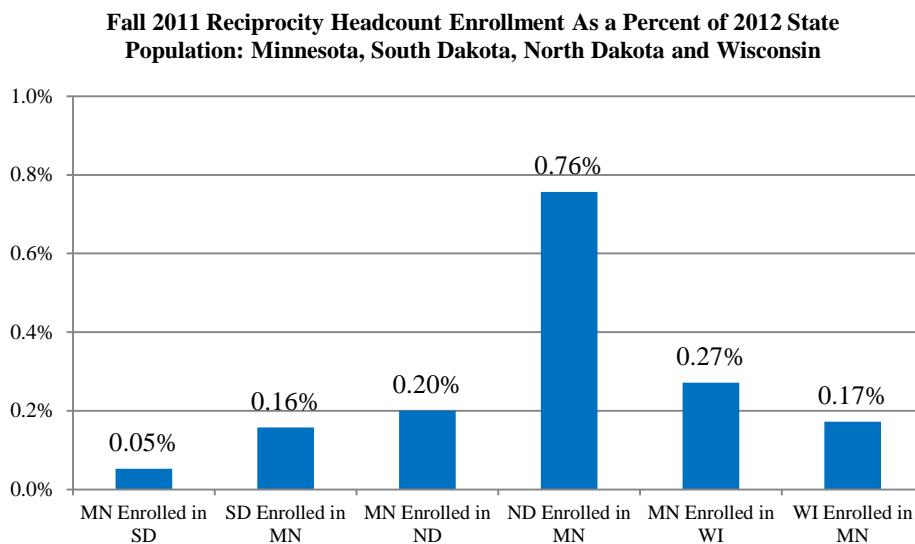
Significant numbers of South and North Dakota residents attended public postsecondary education institutions in Minnesota, given the disparities in state high school graduates and state populations.

Relative to each state’s population, proportionately more South and North Dakota resident reciprocity students attended in Minnesota than Minnesota resident reciprocity students attended in South and North Dakota, even though more Minnesotans attended in South and North Dakota than South and North Dakotans attended in Minnesota.

Proportionately more Minnesotan resident reciprocity students attended in Wisconsin than Wisconsin reciprocity student attended in Minnesota, but the difference was less than in the case of Minnesota and the Dakotas.

Fall 2011 reciprocity headcount enrollment as a percent of the population of the states of Minnesota, South Dakota, North Dakota and Wisconsin is shown in Figure 8.

**Figure 8**



The next section of this paper describes the proximity of public four-year institutions to state population centers and state borders to help in further understanding tuition reciprocity enrollment patterns.

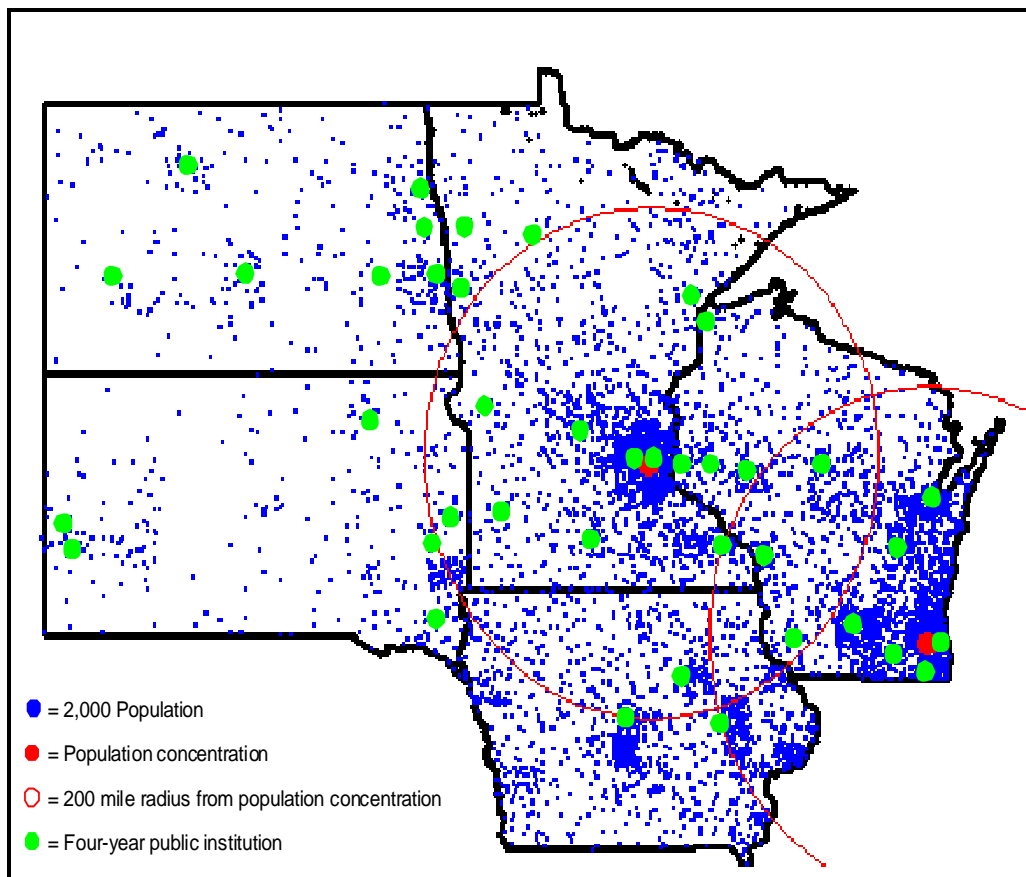
**Proximity of Public Four-Year Reciprocity Institutions to State Population Centers and State Borders:** In addition to state high school graduates and state populations, tuition reciprocity enrollment patterns reflect the proximity of public four-year postsecondary education institutions to state population centers and state borders.

Figure 9 shows the Upper Midwest population and the location of four-year public postsecondary institutions.

- Each blue dot in Figure 9 represents 2,000 people.
- There are two large population centers in the reciprocity states, the Twin Cities metropolitan area in Minnesota and the Milwaukee metropolitan area in Southeast Wisconsin, identified by the two red dots in Figure 9.
- Four-year reciprocity institutions, the green dots in Figure 9, attracting the largest number of reciprocity students are located roughly within or near a 200 mile radius, the red circle in Figure 9, of the Upper Midwest population centers and are generally concentrated along state borders.

**Figure 9**

**Upper Midwest States: Population and Public Four-Year Institutions**



Most Minnesota resident reciprocity students have enrolled at North Dakota State University-Fargo, the University of North Dakota-Grand Forks, South Dakota State University-Brookings and the following University of Wisconsin campuses: Madison, River Falls, Stout, Eau Claire, LaCrosse and Superior, all within a four to six hour drive of the Twin Cities.

The University of Minnesota-Twin Cities and Winona State University on Minnesota's border with Wisconsin have enrolled the most Wisconsin resident reciprocity students.

The distance from Wisconsin’s population center, Milwaukee, to Minnesota has been cited as one possible reason why traditionally fewer Wisconsin resident reciprocity students have enrolled in Minnesota than Minnesota resident reciprocity students have enrolled in Wisconsin. This has led to speculation that the proximity of University of Wisconsin campuses of River Falls, Stout and Eau Claire to Minnesota’s population center in the Twin Cities has resulted in more Minnesota resident reciprocity students enrolling in Wisconsin public postsecondary education institutions.

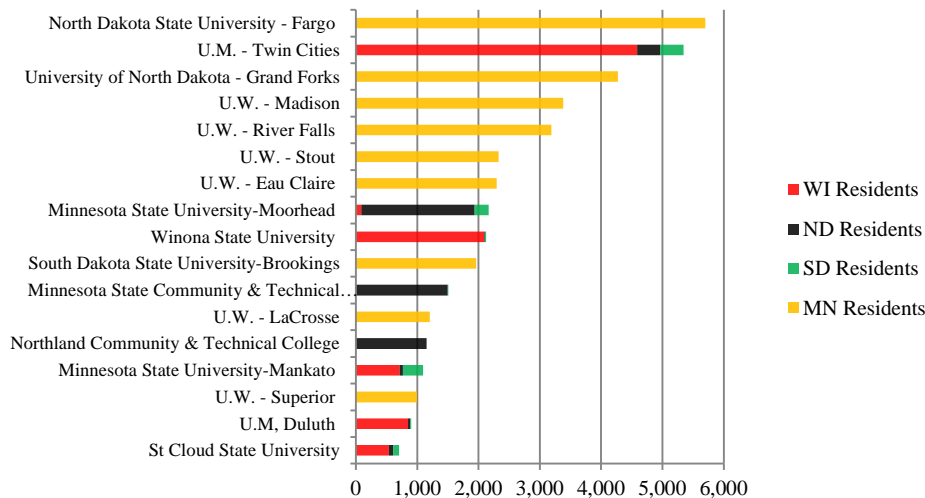
Three Minnesota public postsecondary institutions near Minnesota’s border with North Dakota have enrolled the most North Dakota resident reciprocity students: Minnesota State University-Moorhead, Minnesota State Community and Technical College and Northland Community and Technical College. Minnesota’s two-year campuses in northwest Minnesota have filled a need for two-year technical education historically lacking in North Dakota.

Most tuition reciprocity students have enrolled in institutions at or near Minnesota’s border.

- Ninety public postsecondary education institutions are available to potential reciprocity students in Minnesota, Wisconsin, North Dakota, South Dakota, Iowa and Manitoba.
- Over 90 percent of fall 2011 reciprocity students were concentrated in 17 reciprocity institutions with most located near the borders of Minnesota, Wisconsin, North Dakota and South Dakota, as shown on Figure 10.
- Less than 10 percent of fall 2011 reciprocity students were enrolled over an additional 56 public postsecondary education institutions.

**Figure 10**

**Reciprocity Students Predominantly Attend Institutions Located Near State Borders: Fall 2011 Headcount**



The University of Wisconsin-Madison enrolled a significant number of Minnesota resident reciprocity students and is not near the border with Minnesota, but is between a four and five hour drive from the Twin Cities.

## Financing Tuition Reciprocity

Today, students shoulder primary responsibility for paying for Minnesota's tuition reciprocity agreements through the tuition they pay.

According to 2012 Minnesota Statutes 136A.08, Subd. 3 and 4, Minnesota's reciprocity agreements may include provision for interstate tuition reciprocity payments according to a formula mutually acceptable to the participating jurisdictions. If the agreements include such a provision, the statute specifies recognizing the tuition rates paid by reciprocity students and the number of reciprocity students enrolled in the payment calculations.

Minnesota's tuition reciprocity agreements with the states of Wisconsin and North Dakota include an interstate tuition reciprocity payment. The payment is a cost-based formula accounting for

- reciprocity student paid tuition and
- reciprocity student enrollments.

In the formula, a reciprocity student and the general fund of a reciprocity student's state of residence are responsible for the marginal instructional costs associated with educating a reciprocity student. The approach assumes each state has existing instructional costs of educating their own residents and adding additional non-residents will only marginally increase the cost of instruction at a rate less than full instructional cost.

- Marginal instructional costs are defined as what it costs to add one student to an existing classroom of students.
- Marginal instructional costs are set at 64 percent of the per-student instructional costs within Minnesota's tuition reciprocity agreements.

First, a reciprocity student pays a portion of the marginal instructional cost of his or her education through tuition. Second, the remaining marginal instructional costs are the responsibility of the general fund of a reciprocity student's state of residence, as shown in the following formula.

$$\begin{aligned} & \text{Marginal Instructional Costs per Student} \\ & - \text{Tuition Paid per Student} \\ & = \text{State General Fund Obligation per Student} \end{aligned}$$

Student-paid tuition is subtracted from the marginal instructional costs associated with educating reciprocity students and reduces Minnesota's tuition reciprocity general fund costs. All else being equal, increasing the tuition paid per student decreases a state's general fund obligation for tuition reciprocity. Conversely, decreasing the tuition paid per student increases a state's general fund obligation. Minnesota's tuition reciprocity agreements with Wisconsin and North Dakota are interstate marginal instructional cost agreements. Students, through tuition payments, reduce each participating state's marginal instructional costs.<sup>8</sup>

---

<sup>8</sup> Calling Minnesota's agreements tuition reciprocity agreements rather than marginal instructional cost agreements is more palatable, albeit somewhat misleading and occasionally confusing to the public who may expect a student to pay the resident public postsecondary tuition rate at the institution the student attends in a reciprocity state.

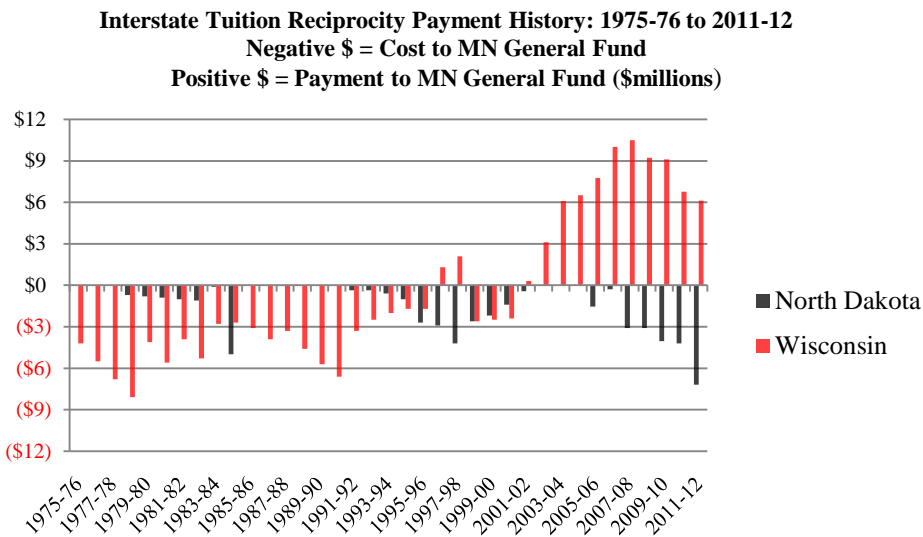


Minnesota’s tuition reciprocity agreements and interstate payments reflect the relationship among state appropriations to public postsecondary governing boards, board allocation practices among instruction and non-instruction, and state and board tuition policies and rate-setting practices in each of the participating jurisdictions.

Minnesota’s general fund tuition reciprocity interstate payments to and from the states of Wisconsin and North Dakota, from 1975-76 through 2011-2012, are shown on Figure 11.

- Negative numbers represent interstate tuition payments made from Minnesota’s general fund to the general funds of Wisconsin (red bar) and North Dakota (black bar).
- Positive numbers represent interstate tuition reciprocity payments made by the general funds of Wisconsin (red bar) and North Dakota (black bar) to Minnesota’s general fund.

**Figure 11**



**Minnesota-Wisconsin Tuition Reciprocity Interstate Payment:** In the Minnesota-Wisconsin tuition reciprocity agreement, the interstate payment formula is applied annually by each state to the other state’s reciprocity students by level of instruction and associated marginal instructional costs on a per credit basis. The state with the larger state general fund obligation makes a payment to the other state calculated as the difference between the two state general fund obligations. Table 2 summarizes the most recent Minnesota-Wisconsin tuition reciprocity interstate payment and shows the \$6.1 million payment, the difference between (\$16.8) million and (\$22.9) million, from the state of Wisconsin to the state of Minnesota general fund based on academic year 2011-2012.

**Table 2**

**Minnesota-Wisconsin Tuition Reciprocity**

**Interstate Payment: Academic Year 2011-2012 (\$ millions)**

| <b>Payment Variable</b>      | <b>WI Obligation to MN</b> | <b>MN Obligation to WI</b> |
|------------------------------|----------------------------|----------------------------|
| Marginal Instructional Costs | \$71.9                     | \$90.6                     |
| - Student Paid Tuition       | \$88.7                     | \$113.5                    |
| = Remainder                  | (\$16.8)                   | (\$22.9)                   |

Difference = \$6.1 million WI Payment to MN General Fund

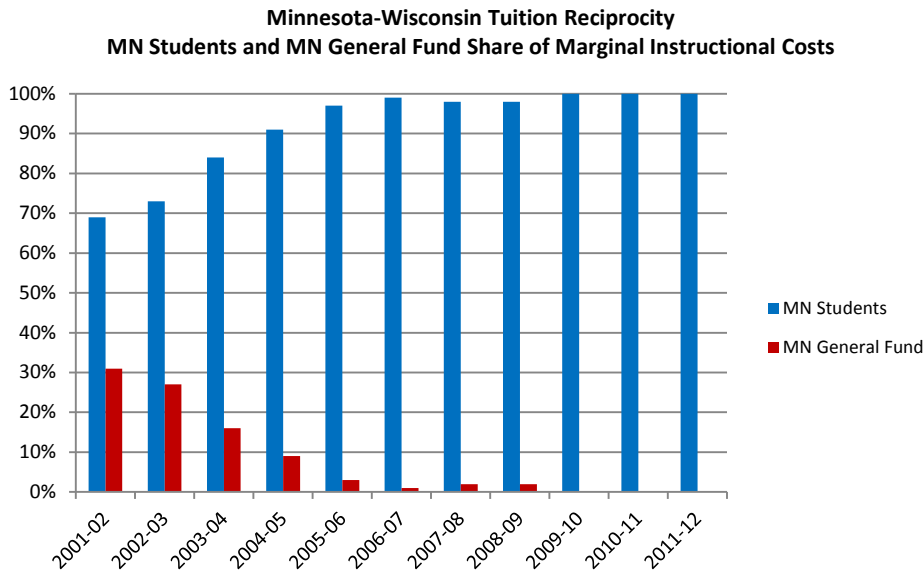
In addition to the \$6.1 million paid to Minnesota’s general fund, Wisconsin paid the University of Minnesota \$4.7 million and the Minnesota State Colleges and Universities \$0.5 million in tuition supplement for academic year 2011-2012. This supplement was used by Wisconsin as a student financial aid tool to reduce the higher Minnesota resident undergraduate tuition rate charged to Wisconsin reciprocity students to a rate charged by a comparable Wisconsin public postsecondary institution. The state of Wisconsin and the state of Minnesota, along with the University of Minnesota and Minnesota State Colleges and Universities, have agreed to eliminate the tuition supplement payment after the 2014-15 academic year.

For additional detail on the Minnesota-Wisconsin 2011-12 interstate tuition reciprocity payment see Attachment B.

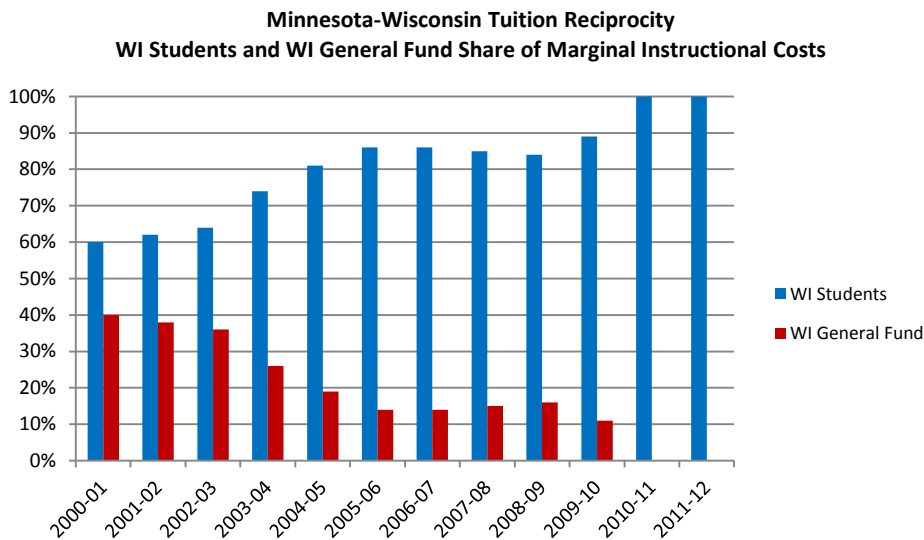
The tuition paid by Minnesota resident and Wisconsin resident reciprocity students exceeded their marginal instructional costs in academic year 2011-2012. Wisconsin’s payment to Minnesota’s general fund represented the difference in the amount of student tuition paid in excess of marginal instructional costs. Recent changes to the Minnesota-Wisconsin tuition reciprocity agreement, moving to the higher of the two state tuition rates at comparable institutions, will likely reduce future Wisconsin’s payments to Minnesota’s general fund, all else being equal.

Student paid tuition in the Minnesota-Wisconsin tuition reciprocity agreement has been increasing faster than marginal instructional costs. As such, responsibility for marginal instructional costs in the Minnesota-Wisconsin tuition reciprocity agreement has incrementally shifted from the state of Minnesota and the state of Wisconsin general funds to reciprocity students. In academic year 2011-2012 Minnesota and Wisconsin resident reciprocity students covered their marginal instructional costs with tuition, as shown in Figure 12 and Figure 13. The blue bar in each figure represents the student tuition share of marginal instructional costs. The red bar represents each state’s general fund share of marginal instructional costs. As shown, students paid for all of their marginal instructional costs with tuition in the Minnesota-Wisconsin tuition reciprocity agreement in academic year 2011-2012.

**Figure 12**



**Figure 13**



**Minnesota-North Dakota Tuition Reciprocity Interstate Payment:** The Minnesota-North Dakota tuition reciprocity agreement uses a marginal cost formula based on the state educating the greater number of students, defined as GAP FTE Students in the payment formula. Historically, more Minnesota residents have enrolled in North Dakota public postsecondary education institutions than North Dakota residents have enrolled in Minnesota public institutions and the state of Minnesota has made a reciprocity payment to the state of North Dakota.<sup>9</sup>

<sup>9</sup> For a description of North Dakota’s success in attracting out-of-state residents to North Dakota public postsecondary education institutions see: Kevin Helliker. *Frigid North Dakota Is a Hot Draw For Out-of-State College Students*, Wall Street Journal, July 16, 2011 (<http://online.wsj.com/article/SB10001424052702304231204576406042109860376.html>).

In academic year 2011-2012, 5,744 more Minnesota resident full-time-equivalent (FTE) reciprocity students were enrolled in North Dakota public postsecondary education institutions than North Dakota resident full-time-equivalent reciprocity students enrolled in Minnesota public institutions. The Minnesota-North Dakota tuition reciprocity payment formula for academic year 2011-2012, showing the state of Minnesota’s \$7.2 million obligation to the state of North Dakota is shown in Table 3. A final “Student Payment” offset in the Minnesota-North Dakota payment formula further reduces the “Gross State Obligation” to arrive at the state of Minnesota’s share of marginal costs, “Net State Obligation.”<sup>10</sup>

**Table 3**

**Minnesota-North Dakota Tuition Reciprocity**

**Interstate Payment: 2011-12**

|   |   |                    |
|---|---|--------------------|
|   | Operational Expenditure per FTE         | \$12,543           |
|   | <u>Marginal Expenditure Rate</u>        | <u>0.64</u>        |
| x | Marginal Expenditure per FTE            | \$8,027            |
| = | <u>Resident Tuition Rate (NDSU/UND)</u> | <u>\$5,964</u>     |
| - | Remaining Marginal Expenditures per FTE | \$2,063            |
| = | <u>GAP FTE Students</u>                 | <u>5,744</u>       |
| x | Gross State Obligation                  | \$11,852,044       |
| - | <u>Student Payment</u>                  | <u>\$4,654,983</u> |
| = | Net State Obligation                    | \$7,197,061        |

Source: Minnesota Office of Higher Education

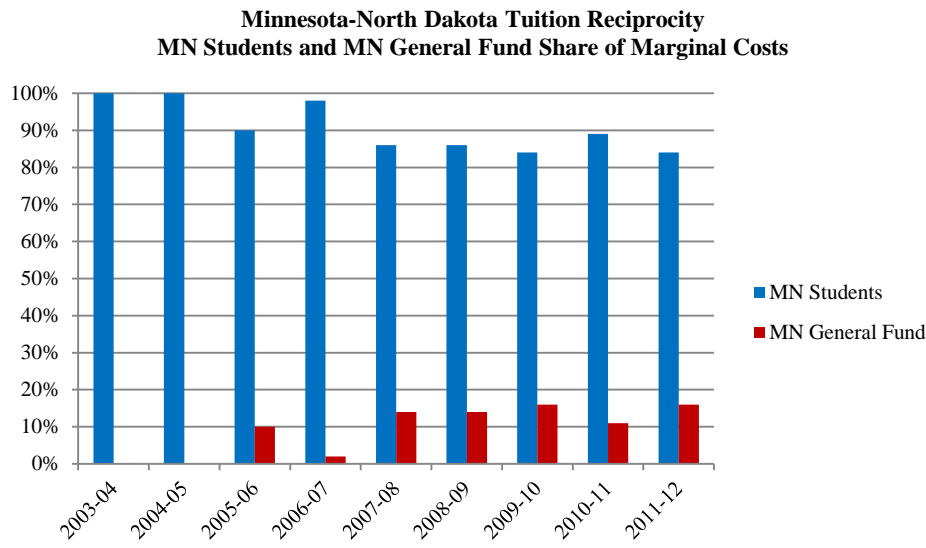
In the Minnesota-North Dakota tuition reciprocity agreement, North Dakota public postsecondary education operational expenditures and resident tuition rates have been increasing at a rate faster than the increase in Minnesota public postsecondary education tuition rates, thereby lowering the difference between the North Dakota resident tuition rates and the comparable Minnesota tuition rates that determine the “Student Payment” in the interstate payment calculation.<sup>11</sup> As such, the Minnesota resident reciprocity student share of marginal expenditures in the Minnesota-North Dakota agreement has varied.

In addition, Minnesota residents have increasingly chosen to attend in North Dakota resulting in upward pressure on Minnesota’s tuition reciprocity net state financial obligation to North Dakota, as shown on Figure 14.

<sup>10</sup> See Appendix A of this report for the history and rationale for the student tuition payment offset in the Minnesota-North Dakota tuition reciprocity agreement.

<sup>11</sup> The “Student Payment” in the Minnesota-North Dakota calculation is defined as the difference between the resident undergraduate tuition rate at NDSU/UND and the comparable Minnesota resident undergraduate rate times the number of Minnesota resident FTE enrolled in North Dakota public postsecondary institutions.

**Figure 14**



Additional detail on the Minnesota-North Dakota tuition reciprocity interstate payment calculation is in Attachment D.

## Tuition Reciprocity Tuition Rate Setting

With students shouldering primary responsibility for financing tuition reciprocity through tuition, how are reciprocity tuition rates set? Tuition rates used in Minnesota’s tuition reciprocity agreements are the tuition rates set by each state’s appropriate governing board. In nearly all cases, undergraduate, graduate and professional reciprocity students pay the higher of the two state resident tuition rates charged at comparable institutions.<sup>12</sup>

For example, a state of Minnesota resident undergraduate student attending the University of Wisconsin-Madison pays the resident undergraduate tuition he or she would pay at the University of Minnesota-Twin Cities. Minnesota’s public postsecondary education tuition rates are generally higher than the tuition rates at comparable institutions in the neighboring reciprocity states. This means Minnesota resident reciprocity students attending public postsecondary institutions in the states of Wisconsin, North Dakota and South Dakota pay the higher Minnesota tuition rate charged at a comparable Minnesota institution. Conversely, this means Wisconsin, North Dakota and South Dakota resident reciprocity students attending Minnesota public postsecondary education institutions pay the higher Minnesota tuition rate at the institution attended.

Minnesota’s tuition reciprocity agreements balance student, public postsecondary institution and taxpayer interests and are linked to a series of tuition rate implementation objectives.

---

<sup>12</sup> Reciprocity students in the Minnesota-Manitoba and the limited Minnesota-Iowa agreements pay the resident tuition at the institution attended. One remaining class of Wisconsin resident undergraduate students admitted prior to the 2008-2009 academic year pay a lower Wisconsin resident undergraduate tuition rate based on the rate at a comparable Wisconsin institution in 2011-2012. This practice was phased out after the 2011-2012 academic year. Other Wisconsin resident undergraduates at the University of Minnesota and MnSCU pay the higher Minnesota undergraduate tuition rate.

- Minnesota’s tuition reciprocity agreements aim to avoid incentives or disincentives for Minnesota resident students to leave their state of residence based on the tuition rates used in the agreements.
- Minnesota’s tuition reciprocity agreements aim to expand market opportunities for Minnesota residents by removing tuition price differences at comparable institutions in the participating states.
- Minnesota’s tuition reciprocity agreements aim to create a market in which public institutions in one state can compete with comparable institutions in the other state for students at a similar price.
- Minnesota’s tuition reciprocity agreements aim to constrain the Minnesota’s general fund costs of educating a Minnesota resident at a reciprocity state institution to an amount similar to or less than Minnesota’s general fund cost of educating a Minnesota resident at a comparable Minnesota institution.

Tuition rates used in Minnesota’s tuition reciprocity agreements reflect agreement among the participating states and their public postsecondary education systems. Reciprocity tuition rate-setting practices have not remained static. Since the inception of statewide tuition reciprocity in the 1960s, the following reciprocity tuition rate setting practices have been used:

1. The resident tuition rate at the institution attended, with or without a surcharge.
2. The resident tuition rate at a comparable institution in the student’s state of residence, with or without a surcharge.
3. The higher of the two-state resident tuition rates at comparable institutions.

Each approach to setting reciprocity tuition rates has advantages and disadvantages. Each approach uses resident tuition rates set by state public system governing boards as the starting point. Alterations to the resident tuition rate starting point, such as surcharges, have been initiated by state public system governing boards. The three tuition-setting approaches, with their advantages and disadvantages, are described in the following section.

**1) Students charged the resident tuition rate at the institution attended:** This approach has the advantage for institutions of collecting tuition revenue from a reciprocity student just as if the reciprocity student were a resident of the state of the enrolling the institution. It also has the advantage of being readily understood by students and their families and benefits students from the higher price state attending in the lower priced state.

Conversely, this approach has the disadvantage of creating a market or price incentive for students to leave their state of residence, if their state of residence has higher resident tuition rates. For example, if the Minnesota-Wisconsin tuition reciprocity agreement were to use the resident tuition rate at the institution attended, Minnesota residents would have a price incentive to attend lower priced Wisconsin institutions. Similarly, Wisconsin residents would have a disincentive to attend higher priced Minnesota institutions. In addition, were this approach to be used in the Minnesota-Wisconsin agreement, it would likely result in Minnesota’s general fund paying a larger share of marginal instructional costs for Minnesota residents attending in Wisconsin than for some Minnesota residents attending in Minnesota.

Tuition rates in Minnesota’s agreements with Manitoba and Iowa Lakes Community College are based on charging students the resident tuition rate at the institution attended. A similar practice was initially

used in Minnesota's agreements with Wisconsin, North Dakota and South Dakota, but abandoned because of the price incentive and disincentive effect on students. The Minnesota-North Dakota tuition reciprocity agreement, for example, experimented with charging reciprocity students the resident rate at the institution attended plus a 25 percent surcharge. This surcharge practice was abandoned because Minnesota public institutions located near the North Dakota border viewed the surcharge as a barrier to successfully recruiting North Dakota residents.

**2) Students charged the resident tuition rate at a comparable institution in the student's state of residence:** The second approach to setting reciprocity tuition rates has the advantage of avoiding price incentives or disincentives for students in choosing public institutions in the participating states. This approach is the most market-like for students and for the states. It has the disadvantage, however, of resulting in institutions in the state with higher resident tuition rates collecting less tuition revenue from a reciprocity student than from a resident student. When paired with an interstate payment calculation, the state with the greater marginal instructional costs not covered by student paid tuition collects a payment from the other state. In the Minnesota-Wisconsin agreement, when this tuition rate setting approach was used, payments from Wisconsin to Minnesota resulting from the tuition reciprocity payment calculation were made to the Minnesota general fund and not to the Minnesota public postsecondary system collecting less revenue from a Wisconsin resident compared to a Minnesota resident.

The practice of charging students the resident tuition at a comparable institution in the student's state of residence was used in the Minnesota-Wisconsin tuition reciprocity agreement from 1983 to 1998. In 1998, the tuition rate-setting practice in the Minnesota-Wisconsin agreement was modified by adding a surcharge to Wisconsin resident undergraduates attending the University of Minnesota-Twin Cities campus. The surcharge was set at 25 percent of the difference between the University of Minnesota-Twin Cities resident undergraduate tuition rate and the University of Wisconsin-Madison resident undergraduate tuition rate. In 1998, Minnesota and Wisconsin also agreed to charge the higher of the two-state resident tuition rates at comparable institutions for graduate and professional reciprocity students. Changes to the tuition rate practice in the Minnesota-Wisconsin tuition reciprocity agreement in 1998 were prompted by the University of Minnesota's desire to have graduate and professional students pay a larger share of the cost of instruction and the state of Wisconsin's desire to reduce Wisconsin's general fund obligation. Nevertheless, undergraduate students were charged the resident tuition rate at a comparable institution in the student's state of residence at all other public institutions in the Minnesota-Wisconsin tuition reciprocity agreement through 2007-2008.

**3) Students charged the higher of the two-state resident tuition rates at comparable institutions:** The third approach to setting reciprocity tuition rates has advantages for institutions in the state with higher resident tuition rates. Similar to the first approach to setting reciprocity tuition rates, institutions in the higher-priced state collect revenue at the same rate from reciprocity and resident students. Students charged the higher of the two-state resident tuition rates at comparable institutions results in price disincentives for students wanting to leave their state of residence, if their state of residence has lower resident tuition rates.

The higher of the two-state resident tuition rates at comparable institutions is current practice in Minnesota's reciprocity agreements with North Dakota and South Dakota, for all students, and with Wisconsin, for graduate and professional students and undergraduates admitted during or after the 2008-2009 academic year. After the 2011-2012 academic year, all Wisconsin undergraduate reciprocity students attending in Minnesota will be charged the higher of the two state undergraduate tuition rates.

**Wisconsin Reciprocity Supplement:** Minnesota resident tuition rates are currently higher than Wisconsin resident tuition rates for all campuses except the University of Wisconsin Centers, where resident tuition rates are higher than the comparable Minnesota community college resident tuition rates. Wisconsin residents enrolling in all other Minnesota public institutions in 2008-2009 and after are charged the higher of the two state tuition rates at comparable Minnesota and Wisconsin institutions. All else being equal, the practice starting in 2008-2009 will reduce Wisconsin's general fund obligation to Minnesota and increase the tuition revenue collected by Minnesota four-year public institutions from Wisconsin undergraduate tuition reciprocity students.<sup>13</sup>

While Wisconsin resident students first enrolling in higher priced Minnesota institutions in 2008-2009 were charged the higher of the two state resident tuition rates at comparable institutions, payment of the higher Minnesota tuition rate has been divided between:

- the Wisconsin resident student paying the higher Minnesota tuition rate, and
- the Wisconsin Higher Education Aids Board, with a Wisconsin reciprocity supplement discounting the higher Minnesota rate charged the Wisconsin resident to the difference between the lower resident tuition rate at a comparable Wisconsin institution and the higher resident tuition rate at a comparable Minnesota institution.

Wisconsin's reciprocity supplement was established in conformity with Minnesota Statutes 136A.08 and Wisconsin Statutes Chapter 39.

Wisconsin's reciprocity supplement has been paid directly to the Minnesota public system enrolling the Wisconsin resident. The supplement has prevented Wisconsin residents from having to pay higher tuition to enroll at Minnesota institutions with a higher resident tuition rate. It also removed the problem of a Minnesota public institution collecting less revenue from enrolling a Wisconsin resident. The state of Wisconsin and the state of Minnesota, along with the University of Minnesota and Minnesota State Colleges and Universities, have agreed to eliminate the tuition supplement payment after the 2014-2015 academic year.

The tuition rate changes to the Minnesota-Wisconsin tuition reciprocity agreement, beginning in 2008-2009, should not result in changes for Minnesota residents attending in Wisconsin, as long as Minnesota resident tuition rates remain higher than the Wisconsin resident tuition rates at comparable Minnesota and Wisconsin institutions. Minnesotans attending in Wisconsin would be charged the higher Minnesota tuition rate.

In summary, the state of Minnesota and the neighboring reciprocity jurisdictions have experimented with different tuition rate structures over the past 40 years. Reciprocity students alternatively have been charged the resident tuition rate at the institution attended the resident tuition rate at a comparable institution in the student's state of residence or the higher of the two state resident tuition rates at comparable institutions. In addition, the reciprocity jurisdictions have experimented with adding tuition surcharges to each rate setting approach. In the end, the higher of the two state resident tuition rates at comparable institutions without a tuition surcharge has emerged as the most acceptable approach. See Attachment C for academic year 2012-13 resident, reciprocity and non-resident tuition rates in the reciprocity states.

---

<sup>13</sup> Consistent with the finding of the Minnesota Office of the Legislative Auditor, "Reducing or eliminating the tuition disparities between Minnesota and Wisconsin residents at Minnesota schools would increase Minnesota taxpayers' financial obligation to Wisconsin" (Office of the Legislative Auditor: *Higher Education Tuition Reciprocity*, September 2003: p. 49).



## Tuition Reciprocity Graduates

Over 3,600 tuition reciprocity students enrolled in Minnesota public postsecondary education institutions earned certificates, diplomas or degrees in Fiscal year 2012. Roughly three quarters of all degrees earned were at the undergraduate level. Over the past five years there has been a modest decrease in the number of degrees earned by tuition reciprocity students enrolled at Minnesota State Colleges and Universities, Figure 15, and the University of Minnesota, Figure 16. Tuition reciprocity graduate data for 2012 are in Attachment D.

Figure 15

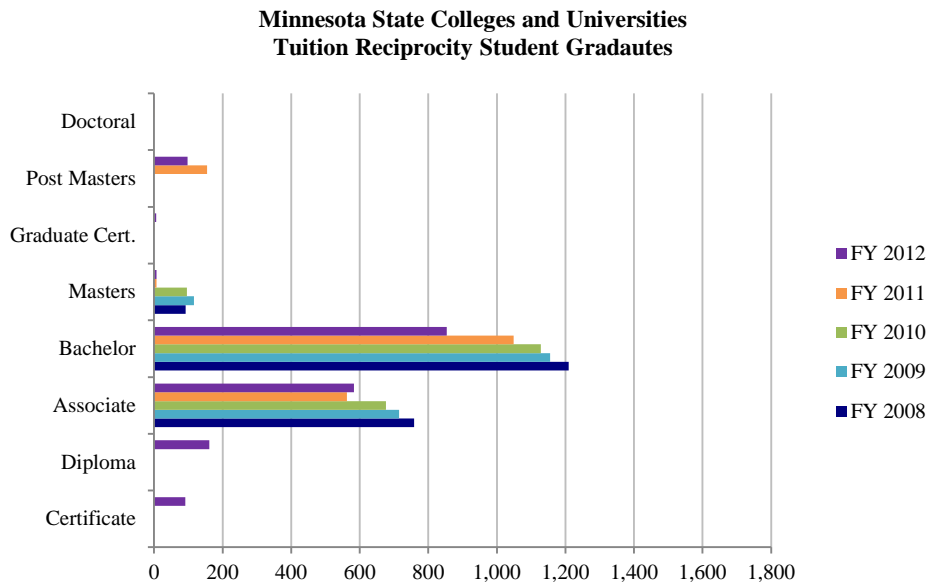
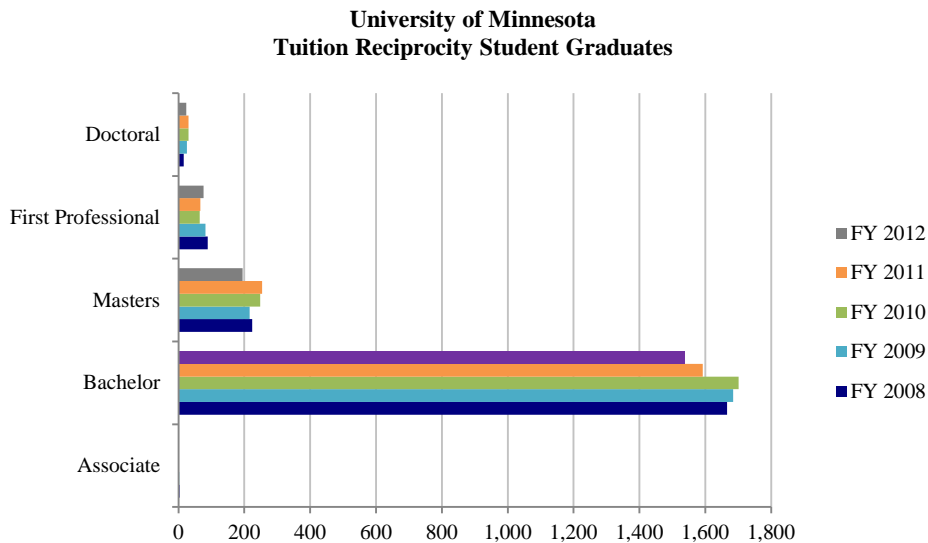


Figure 16



## Tuition Reciprocity Outcomes

The statutory purpose of tuition reciprocity is the mutual improvement of educational advantage for the residents of Minnesota and other states or provinces with which agreements are made. The purpose of tuition reciprocity has remained the same since Minnesota first entered into a tuition reciprocity agreement with Wisconsin in 1969.<sup>14</sup>

Persistent growth in tuition reciprocity enrollment among Minnesotans demonstrates they have found tuition reciprocity to be to their educational advantage.

Incidental to the statutory purpose of tuition reciprocity, research and census data suggest Minnesota's tuition reciprocity agreements have been beneficial for the state, as well.

In Fiscal Year 2012, for example, Minnesota State Colleges and Universities awarded 1,801 certificates, diplomas and degrees and the University of Minnesota awarded 1,834 degrees to reciprocity students.

University of Minnesota researchers asked the question: "How many reciprocity students remain in Minnesota after graduation?" Using University of Minnesota Alumni Association data, Peter Zetterberg and John Kellogg found the following.<sup>15</sup>

*A very high percentage of reciprocity students currently live and work in Minnesota. For those with an undergraduate degree, 30-40 percent of students from Wisconsin, North Dakota, and South Dakota currently live and work in Minnesota.*

A report titled *Stock and Flow of College Education Human Capital by State: 1989 to 1999*, and published in the Postsecondary Educational Opportunity Newsletter, October 2000, was cited by Zetterberg and Kellogg. Data from the October 2000 Newsletter led Zetterberg and Kellogg to the following conclusions.

*While large numbers of students from Wisconsin, North Dakota, and South Dakota choose to live and work in Minnesota following graduation, there is significant evidence that students from Minnesota who earn degrees at institutions in these other states return home. Between 1989 and 2000 the percent of Minnesota's population aged 25 and over with a baccalaureate degree increased from 21.5 percent to 28.0 percent. While there were also some gains in North Dakota, South Dakota, and Wisconsin, they were not nearly as significant. Note that in Minnesota a significant part of the gain was the result of the migration of people with baccalaureate degrees to the state. In other words, the total increase in people with a baccalaureate degree was greater than the number of degrees awarded in the state. The increase due to migration was more than 140,000 for Minnesota, while North Dakota, South Dakota, and Wisconsin all lost people with baccalaureate degrees (net of in-state degree production). What explains*

---

<sup>14</sup> Minnesota Statutes 136A.08, Subd 2.

<sup>15</sup> Peter Zetterberg and John Kellogg, *How Many Reciprocity Student Remain in Minnesota After Graduation?* University of Minnesota Office of Institutional Research, October 2002, 1.

*Minnesota's success? Obviously, most Minnesota students who go to North Dakota, South Dakota, and Wisconsin for their education come home with their baccalaureate degrees while a very significant number of students from these other states who earn their degrees in Minnesota remain in Minnesota.*<sup>16</sup>

Zetterberg and Kellogg concluded Minnesota clearly benefits in very significant ways from the state's reciprocity agreements.

More recent United States Census Bureau human capital data corroborates Zetterberg and Kellogg's findings.

- Minnesota has led the Upper Midwest in the percent of people 25 years and over who have completed a bachelor's degree or higher.
- Minnesota was nearly four percentage points ahead of North Dakota, the Upper Midwest state nearest to Minnesota in the percent of people 25 years and over who have completed a bachelor's degree or higher in 2011.
- Minnesota was over four percentage points above the national average in 2011.

Among Upper Midwest states, Minnesota's human capital stock has fared well and has led the national average since the inception of tuition reciprocity when measured as the percent of total population 25 years and over with a bachelor's degree or higher, as shown in the following Table 4 and the accompanying Figure 17.

---

<sup>16</sup> Zetterberg and Kellogg, 2.

**Table 4**

**Percent of Total Population 25 Years and Over with a Bachelor's Degree or Higher**

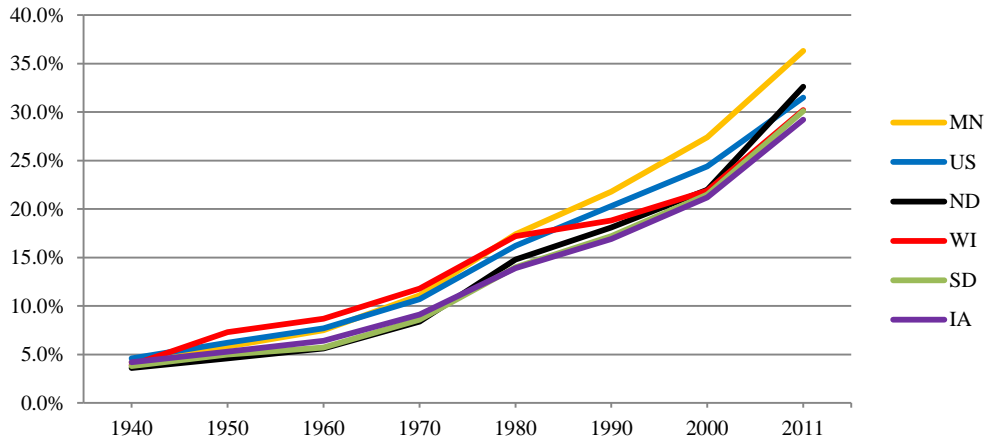
**Upper Midwest States and United States: 1940 to 2011**

| Year | MN    | US    | ND    | WI    | SD    | IA    |
|------|-------|-------|-------|-------|-------|-------|
| 1940 | 4.2%  | 4.6%  | 3.6%  | 3.9%  | 3.8%  | 4.2%  |
| 1950 | 5.8%  | 6.2%  | 4.6%  | 7.3%  | 5.0%  | 5.3%  |
| 1960 | 7.5%  | 7.7%  | 5.6%  | 8.7%  | 5.7%  | 6.4%  |
| 1970 | 11.1% | 10.7% | 8.4%  | 11.8% | 8.6%  | 9.1%  |
| 1980 | 17.4% | 16.2% | 14.8% | 17.2% | 14.0% | 13.9% |
| 1990 | 21.8% | 20.3% | 18.1% | 18.8% | 17.2% | 16.9% |
| 2000 | 27.4% | 24.4% | 22.0% | 21.9% | 21.5% | 21.2% |
| 2011 | 36.3% | 31.5% | 32.6% | 30.2% | 30.1% | 29.2% |

Source: U.S. Census, Decennial Census of Population, 1940 to 2000 and American Community Survey 2011.  
2011 data are five year American Community Survey averages, 2007-2011.

**Figure 17**

**Percent of Total Population 25 Years and Over With a Bachelor's Degree or Higher: Upper Midwest States & U.S. 1940 to 2011**



## Appendix A:

# Minnesota-North Dakota Interstate Payment History

---

The current Minnesota-North Dakota payment calculation was agreed to in 1995 and implemented in academic year 1996-97. Prior to 1996-97, undergraduate and graduate students paid the resident tuition at the institution attended plus a 25 percent surcharge in the Minnesota-North Dakota tuition reciprocity agreement. In addition, the two states computed an interstate payment calculation as follows:

*Each state agrees that in the event that more students from one state receive educational services in the other state than occur in the reverse situation, the state sending the larger number of students shall pay the state educating the larger number of students an amount equal to 25 percent of the resident undergraduate tuition at the University of North Dakota times the number of FTE (full-time-equivalent) students creating the difference except if the difference is less than 100 FTE students, no payment shall be required.<sup>17</sup>*

This method of interstate payment was known as the “gap method” and was based on the difference in the number of students attending in one state versus the number attending in the other state.

Why were changes made to the Minnesota-North Dakota interstate payment calculation in 1995? Minnesota public postsecondary institutions along the North Dakota border found the 25 percent tuition surcharge a barrier to recruiting North Dakota residents and asked to have the surcharge eliminated.

Minnesota representatives approached North Dakota with a proposal similar to the Minnesota-Wisconsin tuition reciprocity agreement interstate payment calculation. Reciprocity students would pay the resident tuition rate charged by a comparable home state institution and the states would settle up with a marginal instructional cost payment calculation.

North Dakota University System representatives were not interested in changing the agreement. They did not see the surcharge as a barrier to recruiting Minnesota residents, were not willing to forego the added tuition revenue from the 25 percent surcharge and found the Minnesota-Wisconsin interstate payment model unduly cumbersome. The North Dakota University System representatives indicated they would consider changes that, at a minimum, would preserve the revenue stream produced by the current practice of tuition with surcharges and the current method of interstate payment.

The solution to the impasse was to phase-out the 25 percent tuition surcharge and charge reciprocity students in the Minnesota-North Dakota agreement the higher of the two state tuition rates at comparable institutions. In addition, the two states agreed to an interstate payment calculation holding North Dakota harmless for the projected tuition reciprocity revenue stream under the pre-1995 agreement.

Minnesota resident tuition rates were and are higher than North Dakota resident tuition rates. Under the terms of the 1995 agreement, Minnesota residents enrolled in North Dakota would pay the higher Minnesota resident tuition rate charged at a comparable home state institution and North Dakota residents enrolled in Minnesota would pay the Minnesota resident tuition rate. The agreement accomplished the following: it enabled the North Dakota University System to capture a portion, but not all, of the revenue from a 25 percent tuition surcharge over the resident tuition rate previously

---

<sup>17</sup> Minnesota-North Dakota Tuition Reciprocity Agreement, 1990.

charged by North Dakota institutions. It also enabled Minnesota public institutions to collect as much in tuition revenue from North Dakota residents as from Minnesota residents, but without the surcharge.

The two states built upon the existing payment method and initially agreed in 1995 if the number of Minnesota residents enrolled full-time in North Dakota public institutions was the same as the number of North Dakota residents enrolled full-time in Minnesota public institutions, the states would call it even and there would be no interstate payment. If residents of one state enrolled in a greater number in the other's public institutions, then the state enrolling the greater number would receive a payment from the other state based on the greater number of students. For example, if 500 more Minnesota residents enrolled full-time in North Dakota public institutions than North Dakota residents enrolled full-time in Minnesota, then Minnesota would owe North Dakota the marginal instructional costs minus student paid tuition for the 500 Minnesota residents enrolled full-time in North Dakota. The proposed payment calculation introduced the idea of basing the payment on instructional costs rather than “. . . an amount equal to 25 percent of the resident undergraduate tuition at the University of North Dakota times the number of FTE students.”<sup>18</sup>

Under the terms of the 1995 agreement, Minnesota was prepared to pay North Dakota the marginal instructional costs associated with the gap number of students minus the tuition paid by the gap number of students.<sup>19</sup> Projections of the revenue stream to North Dakota based on the new marginal instructional cost payment calculation resulted in more revenue to North Dakota than the revenue stream produced by having students pay the resident tuition rate plus a 25 percent surcharge plus the results of the non-marginal instructional cost payment calculation.

To preserve the revenue stream to North Dakota at roughly the amount prior to the 1995 agreement, the two states agreed to a larger student tuition offset than would have been necessary with a payment calculation based only on the marginal instructional costs of the gap number of students minus the tuition paid by the gap number of students. As such, the Minnesota-North Dakota tuition reciprocity interstate payment calculation understates Minnesota's obligation to North Dakota when compared to a marginal instructional cost calculation without an additional student payment subtraction.

---

<sup>18</sup> Minnesota-North Dakota Tuition Reciprocity Agreement, 1990.

<sup>19</sup> There have been between 1.1 and 2.0 Minnesota residents enrolled in North Dakota public institutions for every 1.0 North Dakota residents enrolled in Minnesota public institutions. Minnesotans involved in the discussions with North Dakota in the mid-1990s could not foresee a time when there would be more North Dakota residents enrolled in Minnesota public institutions than Minnesota residents enrolled in North Dakota public institutions, given the difference in Minnesota and North Dakota's population and high school graduates.

See also: Kevin Helliker. *Frigid North Dakota Is a Hot Draw For Out-of-State College Students*, Wall Street Journal, July 16, 2011 (<http://online.wsj.com/article/SB10001424052702304231204576406042109860376.html>).

For former Minnesota House Speaker Rod Searle's comments on an unsuccessful legislative effort in the 1960s to restructure Minnesota public postsecondary education similar to the most popular postsecondary education institutions selected by Minnesota resident reciprocity students in fall 2011, such as North Dakota State University-Fargo, see: Mark Fischenich, *A Life Remembered: Roy Schulz' legacy felt at every turn*, The Mankato Free Press, May 4, 2010 (<http://mankatofreepress.com/local/x1036628138/A-Life-Remembered-Roy-Schulz-legacy-felt-at-every-turn>).

Nevertheless, the 1995 agreement met Minnesota and North Dakota objectives and resulted in:

- Elimination of the 25 percent tuition surcharged as requested by Minnesota institutions; and
- an interstate payment calculation producing a revenue stream to North Dakota similar to the revenue stream produced by charging students the resident tuition rate plus a 25 percent surcharge and the non-marginal instructional cost gap payment method, as sought by the University of North Dakota System.

The Minnesota-North Dakota interstate payment calculation agreed to in 1995 remains in effect. The Minnesota-North Dakota interstate payment calculation for the most recently available academic year is shown in Table 3 in the body of the report and Table B\_3 in Attachment B.

## **Attachment A**

### **Tuition Reciprocity Enrollments**



**Table A\_1****Minnesota-Wisconsin Tuition Reciprocity****Headcount Enrollment: 1985 - 2011**

| Fall Term | Minnesota Residents Attending in Wisconsin | Wisconsin Residents Attending in Minnesota | Ratio |
|-----------|--|--|-------|
| 1985      | 8,659                                      | 4,579                                      | 1.9   |
| 1986      | 9,112                                      | 4,746                                      | 1.9   |
| 1987      | 9,428                                      | 5,557                                      | 1.7   |
| 1988      | 9,876                                      | 6,204                                      | 1.6   |
| 1989      | 10,122                                     | 6,782                                      | 1.5   |
| 1990      | 10,140                                     | 7,412                                      | 1.4   |
| 1991      | 11,150                                     | 7,856                                      | 1.4   |
| 1992      | 10,877                                     | 8,245                                      | 1.3   |
| 1993      | 10,377                                     | 7,242                                      | 1.4   |
| 1994      | 10,646                                     | 7,515                                      | 1.4   |
| 1995      | 10,719                                     | 8,184                                      | 1.3   |
| 1996      | 11,137                                     | 8,585                                      | 1.3   |
| 1997      | 11,500                                     | 9,361                                      | 1.2   |
| 1998      | 12,290                                     | 9,559                                      | 1.3   |
| 1999      | 12,742                                     | 9,283                                      | 1.4   |
| 2000      | 13,022                                     | 9,414                                      | 1.4   |
| 2001      | 13,142                                     | 9,816                                      | 1.3   |
| 2002      | 13,209                                     | 10,487                                     | 1.3   |
| 2003      | 13,277                                     | 11,014                                     | 1.2   |
| 2004      | 13,139                                     | 11,409                                     | 1.2   |
| 2005      | 13,595                                     | 11,418                                     | 1.2   |
| 2006      | 13,686                                     | 11,646                                     | 1.2   |
| 2007      | 13,726                                     | 11,308                                     | 1.2   |
| 2008      | 14,034                                     | 10,690                                     | 1.3   |
| 2009      | 14,152                                     | 10,310                                     | 1.4   |
| 2010      | 14,431                                     | 10,181                                     | 1.4   |
| 2011      | 14,590                                     | 9,848                                      | 1.5   |

Source: Minnesota Office of Higher Education

**Table A\_2**

**Minnesota-Wisconsin Tuition Reciprocity**

**Headcount Enrollment: by Institution: Fall 2011**

---

Minnesota Residents Attending in Wisconsin

| Wisconsin Institutions | Headcount |
|------------------------|-----------|
| U.W. - Madison         | 3,381     |
| U.W. - River Falls     | 3,191     |
| U.W. - Stout           | 2,328     |
| U.W. - Eau Claire      | 2,295     |
| U.W. - LaCrosse        | 1,206     |
| U.W. - Superior        | 995       |
| U.W. - Milwaukee       | 489       |
| U.W. - Stevens Point   | 369       |
| U.W. - Platteville     | 116       |
| U.W. - Green Bay       | 69        |
| U.W. - Oshkosh         | 67        |
| U.W. - Whitewater      | 59        |
| U. W. College System   | 13        |
| U.W. - Parkside        | 12        |

---

Total 14,590

Source: Minnesota Office of Higher Education

**Table A\_3****Minnesota-Wisconsin Tuition Reciprocity****Headcount Enrollment: by Institution: Fall 2011**

| Wisconsin Residents Attending in Minnesota    |              |
|---|--------------|
| Minnesota Institutions                        | Headcount    |
| U.M. - Twin Cities                            | 4,590        |
| Winona State University                       | 2,094        |
| U.M, Duluth                                   | 848          |
| Minnesota State University-Mankato            | 713          |
| St Cloud State University                     | 536          |
| Lake Superior College                         | 365          |
| Century College                               | 159          |
| Minnesota State University-Moorhead           | 89           |
| Metro State University                        | 80           |
| Vermilion Community College                   | 67           |
| Bemidji State University                      | 66           |
| U.M. - Crookston                              | 56           |
| Southwest Minnesota State University          | 28           |
| Minnesota West Community & Technical College  | 26           |
| Mesabi Range Community & Technical College    | 21           |
| Inver Hills Community College                 | 18           |
| Itasca Community College                      | 16           |
| U.M. - Morris                                 | 15           |
| Rochester Community & Technical College       | 14           |
| Northland Community & Technical College       | 10           |
| Hibbing Community College                     | 8            |
| Normandale Community College                  | 6            |
| Anoka-Ramsey Community College                | 4            |
| Ridgewater College                            | 4            |
| Rainy River Community College                 | 4            |
| Central Lakes College                         | 3            |
| Minneapolis Community & Technical College     | 3            |
| Riverland Community College                   | 2            |
| Minnesota State Community & Technical College | 2            |
| Fond du Lac Tribal & Community College        | 1            |
| <b>Total</b>                                  | <b>9,848</b> |

Source: Minnesota Office of Higher Education

**Table A\_4****Minnesota-North Dakota Tuition Reciprocity****Headcount Enrollment: 1985 - 2011**

| Fall Term | Minnesota Residents Attending in North Dakota | North Dakota Residents Attending in Minnesota | Ratio |
|-----------|---|---|-------|
| 1985      | 5,360   | 4,131   | 1.3   |
| 1986      | 5,385   | 4,240   | 1.3   |
| 1987      | 5,537   | 4,461   | 1.2   |
| 1988      | 6,144   | 4,630   | 1.3   |
| 1989      | 6,380   | 4,763   | 1.3   |
| 1990      | 5,873   | 5,160   | 1.1   |
| 1991      | 5,731   | 4,974   | 1.2   |
| 1992      | 5,936   | 4,742   | 1.3   |
| 1993      | 6,062   | 4,582   | 1.3   |
| 1994      | 6,120   | 4,003   | 1.4   |
| 1995      | 6,150   | 4,168   | 1.5   |
| 1996      | 6,129   | 4,295   | 1.4   |
| 1997      | 5,967   | 4,267   | 1.2   |
| 1998      | 5,967   | 4,560   | 1.2   |
| 1999      | 6,021   | 5,049   | 1.1   |
| 2000      | 6,393   | 5,357   | 1.2   |
| 2001      | 6,636   | 5,663   | 1.2   |
| 2002      | 6,912   | 5,818   | 1.2   |
| 2003      | 7,427   | 5,931   | 1.3   |
| 2004      | 7,732   | 5,816   | 1.3   |
| 2005      | 8,089   | 5,931   | 1.4   |
| 2006      | 8,094   | 5,874   | 1.4   |
| 2007      | 8,361   | 5,721   | 1.5   |
| 2008      | 8,358   | 5,610   | 1.5   |
| 2009      | 8,609   | 5,492   | 1.6   |
| 2010      | 10,325  | 5,386   | 1.9   |
| 2011      | 10,790  | 5,295   | 2.0   |

Source: Minnesota Office of Higher Education

**Table A\_5**

**Minnesota-North Dakota Tuition Reciprocity**

**Headcount Enrollment by Institution: Fall 2011**

---

| North Dakota Institutions                        | Headcount |
|--|-----------|
| Minnesota Residents Attending                    |           |
| North Dakota State University - Fargo            | 5,701     |
| University of North Dakota - Grand Forks         | 4,277     |
| North Dakota State College of Science - Wahpeton | 474       |
| Valley City State University                     | 146       |
| Mayville State University                        | 102       |
| Bismarck State College                           | 28        |
| Dickinson State University                       | 20        |
| Lake Region State College                        | 19        |
| University of North Dakota - Williston           | 11        |
| Minot State University                           | 8         |
| North Dakota State University - Bottineau        | 4         |
| Total  | 10,790    |

Source: Minnesota Office of Higher Education

**Table A\_6****Minnesota-North Dakota Tuition Reciprocity****Headcount Enrollment by Institution: Fall 2011**

| Minnesota Residents Attending<br>North Dakota Institutions | Headcount    |
|--|--------------|
| Minnesota State University-Moorhead                        | 1,848        |
| Minnesota State Community & Technical College              | 1,497        |
| Northland Community & Technical College                    | 1,154        |
| University of Minnesota-Twin Cities                        | 374          |
| University of Minnesota-Crookston                          | 83           |
| St Cloud State University                                  | 72           |
| Bemidji State University                                   | 65           |
| Minnesota State University-Mankato                         | 54           |
| University of Minnesota-Duluth                             | 41           |
| Alexandria Technical College                               | 20           |
| NW Technical College-Bemidji                               | 18           |
| Lake Superior College                                      | 10           |
| St Cloud Technical College                                 | 9            |
| Winona State University                                    | 7            |
| Ridgewater College   | 7            |
| Minnesota West Community & Technical College               | 6            |
| Southwest Minnesota State University                       | 5            |
| Metro State University                                     | 5            |
| Vermilion Community College                                | 3            |
| St Paul College  | 3            |
| Rainy River Community College                              | 3            |
| Minnesota State College-SE Technical                       | 2            |
| Pine Technical College                                     | 2            |
| Dakota County Technical College                            | 2            |
| Century College  | 2            |
| Hibbing Community College                                  | 1            |
| Itasca Community College                                   | 1            |
| Normandal Community College                                | 1            |
| <b>Total</b>   | <b>5,295</b> |

Source: Minnesota Office of Higher Education

Table A\_7

Minnesota-South Dakota Tuition Reciprocity

Headcount Enrollment: 1985 - 2011

| Fall Term | Minnesota Residents Attending in South Dakota | South Dakota Residents Attending in Minnesota | Ratio |
|-----------|---|---|-------|
| 1985      | 1,027   | 1,707   | 0.6   |
| 1986      | 1,038   | 1,950   | 0.5   |
| 1987      | 903   | 1,960   | 0.5   |
| 1988      | 968   | 2,098   | 0.5   |
| 1989      | 1,098   | 2,099   | 0.5   |
| 1990      | 1,233   | 2,051   | 0.6   |
| 1991      | 1,451   | 2,066   | 0.7   |
| 1992      | 1,638   | 1,965   | 0.8   |
| 1993      | 1,726   | 1,595   | 1.1   |
| 1994      | 1,923   | 1,512   | 1.3   |
| 1995      | 1,965   | 1,543   | 1.3   |
| 1996      | 1,867   | 1,623   | 1.2   |
| 1997      | 1,821   | 1,634   | 1.1   |
| 1998      | 1,754   | 1,821   | 1.0   |
| 1999      | 1,731   | 1,992   | 0.9   |
| 2000      | 1,683   | 2,133   | 0.8   |
| 2001      | 1,699   | 2,306   | 0.8   |
| 2002      | 1,775   | 2,109   | 0.8   |
| 2003      | 1,779   | 2,209   | 0.8   |
| 2004      | 2,003   | 2,152   | 0.9   |
| 2005      | 1,954   | 2,074   | 0.9   |
| 2006      | 2,284   | 1,926   | 1.2   |
| 2007      | 2,224   | 1,707   | 1.3   |
| 2008      | 2,494   | 1,575   | 1.6   |
| 2009      | 2,662   | 1,552   | 1.7   |
| 2010      | 2,632   | 1,425   | 1.8   |
| 2011      | 2,823   | 1,315   | 2.1   |

Source: Minnesota Office of Higher Education

**Table A\_8**

**Minnesota-South Dakota Tuition Reciprocity**

**Headcount Enrollment by Institution: Fall 2011**

---

Minnesota Residents Attending in South Dakota

| South Dakota Institution                  | Headcount |
|---|-----------|
| South Dakota State University-Brookings   | 1,961     |
| University of South Dakota-Vermillion     | 349       |
| South Dakota School of Mines & Technology | 186       |
| Northern State University                 | 175       |
| Dakota State University                   | 120       |
| Black Hills State University              | 32        |
| Total                                     | 2,823     |

---

Source: Minnesota Office of Higher Education



**Table A\_9**

**Minnesota-South Dakota Tuition Reciprocity**

**Headcount Enrollment by Institution: Fall 2011**

---

South Dakota Residents Attending in Minnesota

| Minnesota Institution                         | Headcount |
|---|-----------|
| University of Minnesota-Twin Cities           | 383       |
| Minnesota State University-Mankato            | 327       |
| Minnesota State University-Moorhead           | 228       |
| Southwest Minnesota State University          | 206       |
| St Cloud State University                     | 94        |
| Winona State University                       | 23        |
| Minnesota West Community & Technical College  | 19        |
| University of Minnesota-Duluth                | 15        |
| University of Minnesota-Crookston             | 11        |
| Minnesota State Community & Technical College | 11        |
| Bemidji State University                      | 8         |
| Riverland Community College                   | 4         |
| Minneapolis Community & Technical College     | 4         |
| Lake Superior College                         | 4         |
| Metro State University                        | 4         |
| Ridgewater College                            | 3         |
| Anoka-Ramsey Community College                | 2         |
| Vermilion Community College                   | 1         |
| University of Minnesota-Morris                | 1         |
| St Paul College                               | 1         |
| South Central College                         | 1         |
| Inver Hills Community College                 | 1         |

---

Total 1,351

Source: Minnesota Office of Higher Education

## **Attachment B**

### **Tuition Reciprocity Interstate Payments**

**Table B\_1**  
**Minnesota-Wisconsin Tuition Reciprocity**  
**Academic Year 2011-2012**

| <b>Minnesota's Obligation to Wisconsin</b>                                   |                          |                                     |                               |                             |                             |
|--|--------------------------|-------------------------------------|-------------------------------|-----------------------------|-----------------------------|
| <b>Institution/Type of Study</b>   | <b>Number of Credits</b> | <b>Marginal Instructional Costs</b> | <b>Gross State Obligation</b> | <b>Student Tuition Paid</b> | <b>Net State Obligation</b> |
| U.W. College System  | 364.00                   | \$150.90                            | \$54,927.60                   | \$73,093.94                 | -\$18,166.34                |
| U.W. Comprehensive Undergraduate   | 288,482.60               | \$192.06                            | \$55,405,968.16               | \$64,916,463.12             | -\$9,510,494.96             |
| U.W.-Milwaukee Undergraduate   | 10,344.00                | \$207.46                            | \$2,145,966.24                | \$4,126,643.26              | -\$1,980,677.02             |
| U.W.-Madison Undergraduate   | 90,297.00                | \$282.76                            | \$25,532,379.72               | \$36,388,275.56             | \$10,855,895.84             |
| U.W. Comprehensive Graduate  | 10,264.50                | \$335.63                            | \$3,445,074.14                | \$3,833,987.79              | -\$388,913.65               |
| U.W.-Milwaukee Graduate  | 2,174.00                 | \$649.95                            | \$1,412,991.30                | \$1,343,352.23              | \$69,639.07                 |
| U.W.-Madison Graduate  | 3,625.00                 | \$723.99                            | \$2,624,463.75                | \$2,854,111.78              | -\$229,648.03               |
| State of WI Obligation to MN   | 405,551.10               |                                     | \$90,621,770.91               | \$113,535,927.68            | \$22,914,156.77             |
| Share of Gross State Obligation  |                          |                                     | 100%                          | 125%                        | -25%                        |
| <b>Wisconsin's Obligation to Minnesota</b>                                   |                          |                                     |                               |                             |                             |
| <b>Institution/Type of Study</b>   | <b>Number of Credits</b> | <b>Marginal Instructional Costs</b> | <b>Gross State Obligation</b> | <b>Student Tuition Paid</b> | <b>Net State Obligation</b> |
| MnSCU Two-Year   | 17,080.00                | \$150.90                            | \$2,577,372.00                | \$2,681,847.80              | -\$104,475.80               |
| MnSCU Four-Year & U.M. Crookston Undergraduate                               | 101,118.50               | \$192.06                            | \$19,420,819.11               | \$21,647,058.84             | -\$2,226,239.73             |
| U.M.-Duluth Undergraduate  | 23,288.00                | \$207.46                            | \$4,831,328.48                | \$8,379,472.95              | -\$3,548,144.47             |
| U.M.-Morris & Twin Cities Undergraduate                                      | 122,997.80               | \$282.76                            | \$34,778,857.93               | \$45,983,941.65             | \$11,205,083.72             |
| MnSCU Four-Year & Undergraduate  | 2,733.00                 | \$335.63                            | \$917,276.79                  | \$949,879.50                | -\$32,602.71                |
| U.M.-Duluth Graduate   | 1,898.00                 | \$649.95                            | \$1,233,605.10                | \$1,291,934.50              | -\$58,329.40                |
| U.M.-Twin Cities Graduate  | 11,276.50                | \$723.99                            | \$8,164,073.24                | \$7,773,488.24              | \$390,585.00                |
| State of MN Obligation to WI   | 280,391.80               |                                     | \$71,923,332.64               | \$88,707,623.48             | \$16,784,290.84             |
| Share of Gross State Obligation  |                          |                                     | 100%                          | 123%                        | -23%                        |
| Difference in Net State Totals = Wisconsin payment to Minnesota General Fund |                          |                                     |                               |                             | \$6,129,865.93              |
| Wisconsin Tuition Supplement Payment to the U.M. Board of Regents            |                          |                                     |                               |                             | \$4,662,253.00              |
| Wisconsin Tuition Supplement Payment to the MnSCU Board of Trustees          |                          |                                     |                               |                             | \$500,702.00                |
| <b>Total Wisconsin Payment</b>   |                          |                                     |                               |                             | <b>\$11,292,820.93</b>      |

Source: Minnesota Office of Higher Education

**Table B\_2**  
**Minnesota-Wisconsin Tuition Reciprocity**  
**Who Pays for Tuition Reciprocity?**  
**Student and State Share of Marginal Instructional Costs**  
**2000-01 to 2011-12**

| Academic<br>Year | Minnesota |       | Wisconsin |       |
|------------------|-----------|-------|-----------|-------|
|                  | Students  | State | Students  | State |
| 2011-12          | 100%      | 0%    | 100%      | 0%    |
| 2010-11          | 100%      | 0%    | 100%      | 0%    |
| 2009-10          | 100%      | 0%    | 89%       | 11%   |
| 2008-09          | 98%       | 2%    | 84%       | 16%   |
| 2007-08          | 98%       | 2%    | 85%       | 15%   |
| 2006-07          | 99%       | 1%    | 86%       | 14%   |
| 2005-06          | 97%       | 3%    | 86%       | 14%   |
| 2004-05          | 91%       | 9%    | 81%       | 19%   |
| 2003-04          | 84%       | 16%   | 74%       | 26%   |
| 2002-03          | 73%       | 27%   | 64%       | 36%   |
| 2001-02          | 69%       | 31%   | 62%       | 38%   |
| 2000-01          | 64%       | 36%   | 60%       | 40%   |

Source: Minnesota Office of Higher Education

**Table B\_3****Minnesota-North Dakota Tuition Reciprocity****Interstate Payment: Academic Year 2011-2012**

|   |   |              |
|---|---|--------------|
|   | Operational Expenditure per FTE         | \$12,543     |
|   | Marginal Expenditure Rate               | 0.64         |
| x | Marginal Expenditure per FTE            | \$8,027      |
| = | Resident Tuition Rate (NDSU/UND)        | \$5,964      |
| - | Remaining Marginal Expenditures per FTE | \$2,063      |
| = | GAP FTE Students                        | 5,744        |
| x | Gross State Obligation                  | \$11,852,044 |
| - | Student Payment                         | \$4,654,983  |
| = | Net State Obligation                    | \$7,197,061  |

Source: Minnesota Office of Higher Education

**Table B\_4**  
**Minnesota-North Dakota Tuition Reciprocity**  
**Who Pays for Tuition Reciprocity?**  
**Student and State Share of Marginal Instructional Costs**

**2003-04 - 2011-12**

| <b>Academic</b><br><b>Year</b> | <b>Minnesota</b> |              |
|--------------------------------|------------------|--------------|
|                                | <b>Students</b>  | <b>State</b> |
| 2011-12                        | 84%              | 16%          |
| 2010-11                        | 89%              | 11%          |
| 2009-10                        | 84%              | 16%          |
| 2008-09                        | 86%              | 14%          |
| 2007-08                        | 86%              | 14%          |
| 2006-07                        | 98%              | 2%           |
| 2005-06                        | 90%              | 10%          |
| 2004-05                        | 100%             | 0%           |
| 2003-04                        | 100%             | 0%           |

Source: Minnesota Office of Higher Education

**Table B.5**  
**Interstate Reciprocity Payments,\***  
**Academic Years 1975-76 - 2010-2011**  
**(\$ Millions)**

| <b>MN General Fund</b> |                     |                  |
|------------------------|---------------------|------------------|
| <b>Year</b>            | <b>North Dakota</b> | <b>Wisconsin</b> |
| 1975-76                | \$0.00              | (\$4.20)         |
| 1976-77                | \$0.00              | (\$5.50)         |
| 1977-78                | \$0.00              | (\$6.80)         |
| 1978-79                | (\$0.70)            | (\$8.10)         |
| 1979-80                | (\$0.80)            | (\$4.10)         |
| 1980-81                | (\$0.90)            | (\$5.60)         |
| 1981-82                | (\$1.00)            | (\$3.90)         |
| 1982-83                | (\$1.10)            | (\$5.30)         |
| 1983-84                | (\$0.10)            | (\$2.80)         |
| 1984-85                | (\$5.00)            | (\$2.70)         |
| 1985-86                | \$0.00              | (\$3.10)         |
| 1986-87                | \$0.00              | (\$3.90)         |
| 1987-88                | \$0.00              | (\$3.30)         |
| 1988-89                | \$0.00              | (\$4.60)         |
| 1989-90                | \$0.00              | (\$5.70)         |
| 1990-91                | \$0.00              | (\$6.60)         |
| 1991-92                | (\$0.35)            | (\$3.30)         |
| 1992-93                | (\$0.37)            | (\$2.50)         |
| 1993-94                | (\$0.60)            | (\$2.00)         |
| 1994-95                | (\$1.00)            | (\$1.70)         |
| 1995-96                | (\$2.70)            | (\$1.70)         |
| 1996-97                | (\$2.90)            | \$1.30           |
| 1997-98                | (\$4.20)            | \$2.10           |
| 1998-99                | (\$2.60)            | (\$2.60)         |
| 1999-00                | (\$2.20)            | (\$2.50)         |
| 2000-01                | (\$1.40)            | (\$2.40)         |
| 2001-02                | (\$0.43)            | \$0.30           |
| 2002-03                | \$0.00              | \$3.10           |
| 2003-04                | \$0.00              | \$6.10           |
| 2004-05                | \$0.00              | \$6.51           |
| 2005-06                | (\$1.54)            | \$7.77           |
| 2006-07                | (\$0.28)            | \$10.00          |
| 2007-08                | (\$3.10)            | \$10.50          |
| 2008-09                | (\$3.10)            | \$9.23           |
| 2009-10                | (\$4.03)            | \$9.10           |
| 2010-11                | (\$4.20)            | \$6.77           |
| 2011-12                | (\$7.20)            | \$6.13           |

\* Figures in brackets denote Minnesota's General Fund payments.  
 Positive figures denote payments to Minnesota's General Fund.  
 Source: Minnesota Office of Higher Education

## **Attachment C**

### **Tuition Reciprocity Tuition Rates**



**Table C\_1**  
**Minnesota-Wisconsin Tuition Reciprocity**  
**Wisconsin Tuition Rates 2012-2013\***

| Wisconsin Institution                | Resident | Reciprocity | Non-Resident |
|--------------------------------------|----------|-------------|--------------|
| U.W. - Baraboo/Sauk                  | \$4,750  | \$4,750.0   | \$12,385     |
| U.W. - Barron/Rice Lake              | \$4,750  | \$4,750.0   | \$12,251     |
| U.W. - Eau Claire - Graduate         | \$7,640  | \$8,153.0   | \$17,899     |
| U.W. - Eau Claire - Undergraduate    | \$7,361  | \$7,361.0   | \$16,258     |
| U.W. - Fond du Lac                   | \$4,750  | \$4,750.0   | \$12,085     |
| U.W. - Fox Valley                    | \$4,750  | \$4,750.0   | \$12,006     |
| U.W. - Green Bay - Graduate          | \$7,640  | \$8,153.0   | \$18,121     |
| U.W. - Green Bay - Undergraduate     | \$6,298  | \$6,784.0   | \$15,221     |
| U.W. - LaCrosse - Graduate           | \$7,780  | \$8,153.0   | \$17,898     |
| U.W. - LaCrosse - Undergraduate      | \$7,585  | \$7,585.0   | \$15,187     |
| U.W. - Madison - Graduate            | \$10,728 | \$14,570.0  | \$25,159     |
| U.W. - Madison - Undergraduate       | \$9,273  | \$12,060.0  | \$26,628     |
| U.W. - Manitowoc                     | \$4,750  | \$4,750.0   | \$12,282     |
| U.W. - Marathon                      | \$4,750  | \$4,750.0   | \$12,072     |
| U.W. - Marinette                     | \$4,750  | \$4,750.0   | \$12,079     |
| U.W. - Marshfield-Wood               | \$4,750  | \$4,750.0   | \$12,077     |
| U.W. - Milwaukee - Graduate          | \$10,387 | \$14,570.0  | \$23,942     |
| U.W. - Milwaukee - Undergraduate     | \$8,091  | \$11,720.0  | \$18,910     |
| U.W. - Oshkosh - Graduate            | \$7,640  | \$8,153.0   | \$17,700     |
| U.W. - Oshkosh - Undergraduate       | \$6,422  | \$6,784.0   | \$14,924     |
| U.W. - Parkside - Graduate           | \$7,640  | \$8,153.0   | \$17,760     |
| U.W. - Parkside - Undergraduate      | \$6,298  | \$6,784.0   | \$14,860     |
| U.W. - Platteville - Graduate        | \$7,640  | \$8,153.0   | \$17,810     |
| U.W. - Platteville - Undergraduate   | \$6,418  | \$6,784.0   | \$15,030     |
| U.W. - Richland                      | \$4,750  | \$4,750.0   | \$12,245     |
| U.W. - River Falls - Graduate        | \$7,640  | \$8,153.0   | \$17,900     |
| U.W. - River Falls - Undergraduate   | \$6,428  | \$6,784.0   | \$15,130     |
| U.W. - Rock Cty                      | \$4,750  | \$4,750.0   | \$12,080     |
| U.W. - Sheboygan                     | \$4,750  | \$4,750.0   | \$12,045     |
| U.W. - Stevens Point - Graduate      | \$7,640  | \$8,153.0   | \$17,842     |
| U.W. - Stevens Point - Undergraduate | \$6,298  | \$6,784.0   | \$15,078     |
| U.W. - Stout - Graduate              | \$8,818  | \$8,818.0   | \$19,906     |
| U.W. - Stout - Undergraduate         | \$7,014  | \$6,784.0   | \$16,690     |
| U.W. - Superior - Graduate           | \$7,640  | \$8,153.0   | \$18,134     |
| U.W. - Superior - Undergraduate      | \$6,535  | \$6,784.0   | \$15,471     |
| U.W. - Washington                    | \$4,750  | \$4,750.0   | \$12,060     |
| U.W. - Waukesha Cty                  | \$4,750  | \$4,750.0   | \$12,052     |
| U.W. - Whitewater - Graduate         | \$7,640  | \$8,153.0   | \$18,490     |
| U.W. - Whitewater - Undergraduate    | \$6,519  | \$6,784.0   | \$15,101     |

\* Resident and Reciprocity rates do not include fees per Minnesota-Wisconsin agreement

Source: Minnesota Office of Higher Education

**Table C\_2**  
**Minnesota-Wisconsin Tuition Reciprocity**  
**Minnesota Tuition Rates 2012-2013\***

| <b>Minnesota Institution</b>                       | <b>Resident</b> | <b>Reciprocity</b> | <b>Non-Resident</b> |
|--|-----------------|--------------------|---------------------|
| Alexandria Technical & Community College           | \$4,816         | \$4,816            | \$5,305             |
| Anoka Technical College                            | \$5,010         | \$5,010            | \$5,589             |
| Anoka-Ramsey Community College                     | \$4,349         | \$4,349            | \$4,987             |
| Bemidji State University-Graduate                  | \$8,532         | \$8,532            | \$9,493             |
| Bemidji State University-Undergraduate             | \$7,145         | \$7,145            | \$8,098             |
| Central Lakes College                              | \$4,773         | \$4,773            | \$5,393             |
| Century College                                    | \$4,818         | \$4,818            | \$5,357             |
| Dakota County Technical College                    | \$5,069         | \$5,069            | \$5,693             |
| Fond Du Lac Tribal & Community College             | \$4,767         | \$4,767            | \$5,256             |
| Hennepin Technical College                         | \$4,701         | \$4,701            | \$5,110             |
| Hibbing Community College                          | \$4,729         | \$4,750            | \$6,475             |
| Inver Hills Community College                      | \$4,770         | \$4,770            | \$5,272             |
| Itasca Community College                           | \$4,729         | \$4,750            | \$6,489             |
| Lake Superior College                              | \$4,418         | \$4,750            | \$9,339             |
| Mesabi Range College                               | \$4,729         | \$4,750            | \$6,475             |
| Metropolitan State University-Graduate             | \$7,856         | \$7,856            | \$16,025            |
| Metropolitan State University-Undergraduate        | \$6,329         | \$6,667            | \$13,227            |
| Minneapolis Community & Technical College          | \$4,658         | \$4,658            | \$5,342             |
| Minnesota State College-Southeast Technical        | \$5,019         | \$5,019            | \$5,614             |
| Minnesota State Community & Technical College      | \$4,824         | \$4,824            | \$5,298             |
| Minnesota State University, Mankato-Graduate       | \$8,280         | \$8,280            | \$9,144             |
| Minnesota State University, Mankato-Undergraduate  | \$6,668         | \$6,668            | \$17,785            |
| Minnesota State University-Moorhead-Graduate       | \$7,852         | \$7,852            | \$16,598            |
| Minnesota State University-Moorhead-Undergraduate  | \$6,898         | \$6,898            | \$14,241            |
| Minnesota West Community & Technical College       | \$5,147         | \$5,147            | \$5,660             |
| Normandale Community College                       | \$4,845         | \$4,845            | \$5,694             |
| North Hennepin Community College                   | \$4,952         | \$4,952            | \$5,448             |
| Northland Community & Technical College            | \$4,950         | \$4,950            | \$5,502             |
| Northwest Technical College - Bemidji              | \$5,190         | \$5,190            | \$5,481             |
| Pine Technical College                             | \$4,595         | \$4,595            | \$9,676             |
| Rainy River Community College                      | \$4,729         | \$4,750            | \$6,505             |
| Ridgewater College                                 | \$4,839         | \$4,839            | \$5,375             |
| Riverland Community & Technical College            | \$4,938         | \$4,938            | \$5,510             |
| Rochester Community & Technical College            | \$4,923         | \$4,923            | \$5,609             |
| South Central College                              | \$4,836         | \$4,836            | \$5,355             |
| Southwest Minnesota State University-Graduate      | \$8,436         | \$8,436            | \$9,512             |
| Southwest Minnesota State University-Undergraduate | \$6,986         | \$6,986            | \$8,062             |
| St Cloud State University-Graduate                 | \$8,033         | \$8,033            | \$13,411            |
| St Cloud State University-Undergraduate            | \$6,584         | \$6,667            | \$15,114            |
| St Cloud Technical College                         | \$4,767         | \$4,767            | \$5,293             |
| St Paul College                                    | \$4,851         | \$4,851            | \$5,198             |

**Table C\_2 (continued)**  
**Minnesota-Wisconsin Tuition Reciprocity**  
**Minnesota Tuition Rates 2012-2013\***

| <b>Minnesota Institution</b>                     | <b>Resident</b> | <b>Reciprocity</b> | <b>Non-Resident</b> |
|--|-----------------|--------------------|---------------------|
| University Of Minnesota - Crookston              | \$10,030        | \$10,030           | \$11,456            |
| University Of Minnesota - Duluth                 | \$11,720        | \$11,720           | \$15,422            |
| University Of Minnesota - Duluth - Graduate      | \$14,570        | \$14,570           | \$23,375            |
| University Of Minnesota - Morris                 | \$11,720        | \$11,720           | \$12,549            |
| University Of Minnesota - Twin Cities            | \$12,060        | \$12,060           | \$18,776            |
| University Of Minnesota - Twin Cities - Graduate | \$14,570        | \$14,570           | \$23,635            |
| Vermilion Community College                      | \$4,728         | \$4,750            | \$6,505             |
| Winona State University-Graduate                 | \$8,387         | \$8,387            | \$13,557            |
| Winona State University-Undergraduate            | \$6,866         | \$6,866            | \$14,213            |

\* Resident and Reciprocity rates do not include fees per Minnesota-Wisconsin agreement

Source: Minnesota Office of Higher Education

**Table C\_3****Minnesota-North Dakota Tuition Reciprocity  
North Dakota Tuition Rates 2012-2013\***

| <b>North Dakota Schools</b>                            | <b>Resident</b> | <b>Reciprocity</b> | <b>Non-Resident</b> |
|--|-----------------|--------------------|---------------------|
| Bismarck State College - Undergraduate                 | \$3,364         | \$4,793            | \$9,625             |
| Dakota College of Bottineau                            | \$3,120         | \$4,793            | \$5,447             |
| Dickinson State University - Undergraduate             | \$4,524         | \$5,026            | \$13,273            |
| Lake Region State College                              | \$3,065         | \$3,065            | \$3,908             |
| Mayville State University - Undergraduate              | \$4,484         | \$4,982            | \$8,436             |
| Minot State University - Graduate                      | \$6,220         | \$6,220            | \$7,439             |
| Minot State University - Undergraduate                 | \$4,703         | \$4,703            | \$5,922             |
| NDSCS-Wahpeton - Undergraduate                         | \$3,368         | \$3,742            | \$9,576             |
| North Dakota State University-Fargo - Graduate         | \$6,580         | \$8,153            | \$18,667            |
| North Dakota State University-Fargo - Undergraduate    | \$6,135         | \$6,708            | \$17,479            |
| University of North Dakota-Grand Forks - Graduate      | \$6,388         | \$8,153            | \$18,371            |
| University of North Dakota-Grand Forks - Undergraduate | \$5,938         | \$6,708            | \$17,170            |
| Valley City State University - Undergraduate           | \$4,657         | \$5,174            | \$14,111            |
| Williston State College                                | \$3,020         | \$3,020            | \$4,140             |

\* Resident and Reciprocity rates do not include fees per Minnesota-North Dakota agreement

Source: Minnesota Office of Higher Education

**Table C\_4**  
**Minnesota-North Dakota Tuition Reciprocity**  
**Minnesota Tuition Rates 2012-2013\***

| <b>Minnesota Institution</b>                       | <b>Resident</b> | <b>Reciprocity</b> | <b>Non-Resident</b> |
|--|-----------------|--------------------|---------------------|
| Alexandria Technical & Community College           | \$4,816         | \$4,816            | \$5,305             |
| Anoka Technical College                            | \$5,010         | \$5,010            | \$5,589             |
| Anoka-Ramsey Community College                     | \$4,349         | \$4,349            | \$4,987             |
| Bemidji State University-Graduate                  | \$8,532         | \$8,532            | \$9,493             |
| Bemidji State University-Undergraduate             | \$7,145         | \$7,145            | \$8,098             |
| Central Lakes College                              | \$4,773         | \$4,773            | \$5,393             |
| Century College                                    | \$4,818         | \$4,818            | \$5,357             |
| Dakota County Technical College                    | \$5,069         | \$5,069            | \$5,693             |
| Fond Du Lac Tribal & Community College             | \$4,767         | \$4,767            | \$5,256             |
| Hennepin Technical College                         | \$4,701         | \$4,701            | \$5,110             |
| Hibbing Community College                          | \$4,729         | \$4,729            | \$6,475             |
| Inver Hills Community College                      | \$4,770         | \$4,770            | \$5,272             |
| Itasca Community College                           | \$4,729         | \$4,729            | \$6,489             |
| Lake Superior College                              | \$4,418         | \$4,418            | \$9,339             |
| Mesabi Range College                               | \$4,729         | \$4,729            | \$6,475             |
| Metropolitan State University-Graduate             | \$7,856         | \$7,856            | \$16,025            |
| Metropolitan State University-Undergraduate        | \$6,329         | \$6,329            | \$13,227            |
| Minneapolis Community & Technical College          | \$4,658         | \$4,658            | \$5,342             |
| Minnesota State Community & Technical College      | \$5,019         | \$5,019            | \$5,614             |
| Minnesota State University, Mankato-Graduate       | \$4,824         | \$4,824            | \$5,298             |
| Minnesota State University, Mankato-Undergraduate  | \$8,280         | \$8,280            | \$9,144             |
| Minnesota State University-Moorhead-Graduate       | \$6,668         | \$6,668            | \$17,785            |
| Minnesota State University-Moorhead-Undergraduate  | \$7,852         | \$7,852            | \$16,598            |
| Minnesota West Community & Technical College       | \$6,898         | \$6,898            | \$14,241            |
| Normandale Community College                       | \$5,147         | \$5,147            | \$5,660             |
| North Hennepin Community College                   | \$4,845         | \$4,845            | \$5,694             |
| Northland Community & Technical College            | \$4,952         | \$4,952            | \$5,448             |
| Northwest Technical College - Bemidji              | \$4,950         | \$4,950            | \$5,502             |
| Pine Technical College                             | \$5,190         | \$5,190            | \$5,481             |
| Rainy River Community College                      | \$4,595         | \$4,595            | \$9,676             |
| Ridgewater College                                 | \$4,729         | \$4,729            | \$6,505             |
| Riverland Community & Technical College            | \$4,839         | \$4,839            | \$5,375             |
| Rochester Community & Technical College            | \$4,938         | \$4,938            | \$5,510             |
| South Central College                              | \$4,923         | \$4,923            | \$5,609             |
| Southwest Minnesota State University-Graduate      | \$4,836         | \$4,836            | \$5,355             |
| Southwest Minnesota State University-Undergraduate | \$8,436         | \$8,436            | \$9,512             |
| St Cloud State University-Graduate                 | \$6,986         | \$6,986            | \$8,062             |
| St Cloud State University-Undergraduate            | \$8,033         | \$8,033            | \$13,411            |
| St Cloud Technical College                         | \$6,584         | \$6,584            | \$15,114            |
| St Paul College                                    | \$4,767         | \$4,767            | \$5,293             |

**Table C\_4 (continued)**  
**Minnesota-North Dakota Tuition Reciprocity**  
**Minnesota Tuition Rates 2012-2013\***

| <b>Minnesota Institution</b>                     | <b>Resident</b> | <b>Reciprocity</b> | <b>Non-Resident</b> |
|--|-----------------|--------------------|---------------------|
| University Of Minnesota - Crookston              | \$4,851         | \$4,851            | \$5,198             |
| University Of Minnesota - Duluth                 | \$10,030        | \$10,030           | \$11,456            |
| University Of Minnesota - Duluth - Graduate      | \$11,720        | \$11,720           | \$15,422            |
| University Of Minnesota - Morris                 | \$14,570        | \$14,570           | \$23,375            |
| University Of Minnesota - Twin Cities            | \$11,720        | \$11,720           | \$12,549            |
| University Of Minnesota - Twin Cities - Graduate | \$12,060        | \$12,060           | \$18,776            |
| Vermilion Community College                      | \$14,570        | \$14,570           | \$23,635            |
| Winona State University-Graduate                 | \$4,728         | \$4,728            | \$6,505             |
| Winona State University-Undergraduate            | \$8,387         | \$8,387            | \$13,557            |
| Winona State University-Undergraduate            | \$6,866         | \$6,866            | \$14,213            |

\* Resident and Reciprocity rates do not include fees per Minnesota-North Dakota agreement

Source: Minnesota Office of Higher Education

**Table C\_5****Minnesota-South Dakota Tuition Reciprocity  
South Dakota Tuition & Fee Rates 2012-2013\***

| <b>South Dakota Institutions</b>                          | <b>Resident</b> | <b>Reciprocity</b> | <b>Non-Resident</b> |
|---|-----------------|--------------------|---------------------|
| Black Hills State College - Graduate                      | \$7,394         | \$10,361           | \$12,441            |
| Black Hills State College - Undergraduate                 | \$7,320         | \$8,598            | \$9,185             |
| Dakota State University - Graduate                        | \$8,046         | \$10,361           | \$13,093            |
| Dakota State University - Undergraduate                   | \$7,950         | \$8,598            | \$9,815             |
| Northern State University - Graduate                      | \$7,353         | \$10,361           | \$12,400            |
| Northern State University - Undergraduate                 | \$7,269         | \$8,598            | \$9,134             |
| South Dakota School of Mines & Technology - Graduate      | \$8,487         | \$10,361           | \$13,761            |
| South Dakota School of Mines & Technology - Undergrad     | \$8,407         | \$8,598            | \$10,353            |
| South Dakota State University - Brookings - Graduate      | \$7,529         | \$10,361           | \$12,803            |
| South Dakota State University - Brookings - Undergraduate | \$7,404         | \$8,598            | \$9,350             |
| University of South Dakota - Vermillion - Graduate        | \$7,769         | \$10,361           | \$13,043            |
| University of South Dakota - Vermillion - Undergraduate   | \$7,704         | \$8,598            | \$9,650             |

\* Includes fees per Minnesota-South Dakota agreement

Source: Minnesota Office of Higher Education

**Table C\_6**  
**Minnesota-South Dakota Tuition Reciprocity**  
**Minnesota Tuition & Fee Rates 2012-2013\***

| <b>Minnesota Institution</b>                       | <b>Resident</b> | <b>Reciprocity</b> | <b>Non-Resident</b> |
|--|-----------------|--------------------|---------------------|
| Alexandria Technical & Community College           | \$4,816         | \$5,305            | \$5,305             |
| Anoka Technical College                            | \$5,010         | \$5,589            | \$5,589             |
| Anoka-Ramsey Community College                     | \$4,349         | \$5,587            | \$4,987             |
| Bemidji State University-Graduate                  | \$8,532         | \$9,493            | \$9,493             |
| Bemidji State University-Undergraduate             | \$7,145         | \$8,098            | \$8,098             |
| Central Lakes College                              | \$4,773         | \$6,052            | \$5,393             |
| Century College                                    | \$4,818         | \$6,022            | \$5,357             |
| Dakota County Technical College                    | \$5,069         | \$5,693            | \$5,693             |
| Fond Du Lac Tribal & Community College             | \$4,767         | \$5,914            | \$5,256             |
| Hennepin Technical College                         | \$4,701         | \$5,110            | \$5,110             |
| Hibbing Community College                          | \$4,729         | \$5,946            | \$6,475             |
| Inver Hills Community College                      | \$4,770         | \$5,930            | \$5,272             |
| Itasca Community College                           | \$4,729         | \$5,960            | \$6,489             |
| Lake Superior College                              | \$4,418         | \$5,532            | \$9,339             |
| Mesabi Range College                               | \$4,729         | \$5,946            | \$6,475             |
| Metropolitan State University-Graduate             | \$7,856         | \$8,169            | \$16,025            |
| Metropolitan State University-Undergraduate        | \$6,329         | \$7,555            | \$13,227            |
| Minneapolis Community & Technical College          | \$4,658         | \$5,985            | \$5,342             |
| Minnesota State College-Southeast Technical        | \$19,500        | NA                 | NA                  |
| Minnesota State Community & Technical College      | \$5,019         | \$5,614            | \$5,614             |
| Minnesota State University, Mankato-Graduate       | \$4,824         | \$5,964            | \$5,298             |
| Minnesota State University, Mankato-Undergraduate  | \$8,280         | \$9,144            | \$9,144             |
| Minnesota State University-Moorhead-Graduate       | \$6,668         | \$7,555            | \$17,785            |
| Minnesota State University-Moorhead-Undergraduate  | \$7,852         | \$8,747            | \$16,598            |
| Minnesota West Community & Technical College       | \$6,898         | \$7,793            | \$14,241            |
| Normandale Community College                       | \$5,147         | \$6,370            | \$6,660             |
| North Hennepin Community College                   | \$4,845         | \$6,363            | \$5,694             |
| Northland Community & Technical College            | \$4,952         | \$6,131            | \$5,448             |
| Northwest Technical College - Bemidji              | \$4,950         | \$6,185            | \$5,502             |
| Pine Technical College                             | \$5,190         | \$5,481            | \$5,481             |
| Rainy River Community College                      | \$4,595         | \$5,081            | \$9,676             |
| Ridgewater College                                 | \$4,729         | \$5,976            | \$6,505             |
| Riverland Community & Technical College            | \$4,839         | \$6,043            | \$5,375             |
| Rochester Community & Technical College            | \$4,938         | \$6,191            | \$5,510             |
| South Central College                              | \$4,923         | \$6,288            | \$5,609             |
| Southwest Minnesota State University-Graduate      | \$4,836         | \$5,355            | \$5,355             |
| Southwest Minnesota State University-Undergraduate | \$8,436         | \$9,512            | \$9,512             |
| St Cloud State University-Graduate                 | \$6,986         | \$8,062            | \$8,062             |
| St Cloud State University-Undergraduate            | \$8,033         | \$8,921            | \$13,411            |
| St Cloud Technical College                         | \$6,584         | \$7,555            | \$15,114            |
| St Paul College                                    | \$4,767         | \$5,293            | \$5,293             |



**Table C\_6 (continued)**  
**Minnesota-South Dakota Tuition Reciprocity**  
**Minnesota Tuition & Fee Rates 2012-2013\***

| <b>Minnesota Institution</b>                     | <b>Resident</b> | <b>Reciprocity</b> | <b>Non-Resident</b> |
|--|-----------------|--------------------|---------------------|
| University Of Minnesota - Crookston              | \$4,851         | \$5,198            | \$5,198             |
| University Of Minnesota - Duluth                 | \$10,030        | \$11,456           | \$11,456            |
| University Of Minnesota - Duluth - Graduate      | \$11,720        | \$12,757           | \$15,422            |
| University Of Minnesota - Morris                 | \$14,570        | \$15,625           | \$23,375            |
| University Of Minnesota - Twin Cities            | \$11,720        | \$12,549           | \$12,549            |
| University Of Minnesota - Twin Cities - Graduate | \$12,060        | \$13,526           | \$18,776            |
| Vermilion Community College                      | \$14,570        | \$15,885           | \$23,635            |
| Winona State University-Graduate                 | \$4,728         | \$5,974            | \$6,505             |
| Winona State University-Undergraduate            | \$8,387         | \$9,313            | \$13,557            |
| Winona State University-Undergraduate            | \$6,866         | \$8,722            | \$14,213            |

\* Includes fees per Minnesota-South Dakota agreement

Source: Minnesota Office of Higher Education

## **Attachment D**

### **Tuition Reciprocity Graduates**

**Table D\_1**  
**University of Minnesota**  
**Graduates Enrolled as Reciprocity Students**  
**Academic Year 2011-2012**

| <b>Campus</b> | <b>Degree Type</b> |                   |                 |                   |                 | <b>Total</b> |
|---------------|--------------------|-------------------|-----------------|-------------------|-----------------|--------------|
|               | <b>Associate</b>   | <b>Bachelor's</b> | <b>Master's</b> | <b>First Prfl</b> | <b>Doctoral</b> |              |
| Crookston     |                    | 30                |                 |                   |                 | 30           |
| Duluth        |                    | 170               | 22              |                   |                 | 192          |
| Morris        |                    | 8                 |                 |                   |                 | 8            |
| Twin Cities   |                    | 1,331             | 173             | 76                | 24              | 1,604        |
| <b>Total</b>  |                    | <b>1,539</b>      | <b>195</b>      | <b>76</b>         | <b>24</b>       | <b>1,834</b> |

Source: University of Minnesota

**Table D\_2**

**Minnesota State Colleges & Universities: Preliminary Fiscal Year 2012 Graduates Who Attended as Tuition Reciprocity Students:**

| Institution                                   | Degree Type |            |            |            |                      |          |               |           | Total        |
|---|-------------|------------|------------|------------|----------------------|----------|---------------|-----------|--------------|
|   | Certificate | Diploma    | Associate  | Bachelor's | Graduate Certificate | Master's | Post-master's | Doctorate |              |
| Alexandria Technical College                  | 1           |            | 7          |            |                      |          |               |           | 8            |
| Anoka-Ramsey Community College                |             |            |            |            |                      |          |               |           |              |
| Anoka Technical College                       |             |            | 1          |            |                      |          |               |           | 1            |
| Central Lakes College                         |             |            |            |            |                      |          |               |           |              |
| Century College                               |             | 2          | 1          |            |                      |          |               |           | 3            |
| Dakota County Technical College               |             | 1          | 4          |            |                      |          |               |           | 5            |
| Fond du Lac Tribal & Community College        |             |            |            |            |                      |          |               |           |              |
| Hennepin Technical College                    |             |            |            |            |                      |          |               |           |              |
| Inver Hills Community College                 |             |            | 1          |            |                      |          |               |           | 1            |
| Lake Superior College                         | 3           |            | 2          |            |                      |          |               |           | 5            |
| Minneapolis Community & Technical College     |             | 1          |            |            |                      |          |               |           | 1            |
| Minnesota State College - Southeast Technical |             | 18         | 18         |            |                      |          |               |           | 36           |
| Minnesota State Community & Technical College | 16          | 68         | 288        |            |                      |          |               |           | 372          |
| Minnesota West Community & Technical College  |             | 2          | 5          |            |                      |          |               |           | 7            |
| Normandale Community College                  |             |            | 1          |            |                      |          |               |           | 1            |
| North Hennepin Community College              |             |            |            |            |                      |          |               |           |              |
| North East Higher Education District          |             |            |            |            |                      |          |               |           |              |
| Hibbing Community College                     |             | 1          |            |            |                      |          |               |           | 1            |
| Itasca Community College                      |             |            |            |            |                      |          |               |           |              |
| Mesabi Range Community & Technical College    |             |            | 1          |            |                      |          |               |           | 1            |
| Rainey River Community College                |             | 2          | 2          |            |                      |          |               |           | 4            |
| Vermillion Community College                  |             |            | 2          |            |                      |          |               |           | 2            |
| Northland Community & Technical College       | 62          | 49         | 225        |            |                      |          |               |           | 336          |
| Northwest Technical College - Bemidji         |             | 1          | 3          |            |                      |          |               |           | 4            |
| Pine Technical College                        | 7           | 14         | 5          |            |                      |          |               |           | 26           |
| Ridgewater College                            |             |            | 1          |            |                      |          |               |           | 1            |
| Riverland Community College                   |             |            | 1          |            |                      |          |               |           | 1            |
| Rochester Community & Technical College       |             | 1          | 1          |            |                      |          |               |           | 2            |
| St. Cloud Technical College                   |             | 1          | 8          |            |                      |          |               |           | 9            |
| St. Paul College                              | 1           |            | 2          |            |                      |          |               |           | 3            |
| South Central College                         |             |            |            |            |                      |          |               |           |              |
| <b>Subtotal Colleges</b>                      | <b>90</b>   | <b>161</b> | <b>579</b> |            |                      |          |               |           | <b>830</b>   |
| Bemidji State University                      |             |            | 1          | 17         |                      |          |               |           | 18           |
| Metropolitan State University                 |             |            |            | 9          |                      |          |               |           | 9            |
| Minnesota State University Mankato            |             |            |            | 115        | 1                    | 3        | 19            |           | 138          |
| Minnesota State University Moorhead           | 1           |            | 3          | 412        | 5                    | 4        | 39            |           | 464          |
| St. Cloud State University                    |             |            |            | 69         |                      |          | 9             | 1         | 79           |
| Southwest Minnesota State University          |             |            |            | 28         |                      |          | 20            |           | 48           |
| Winona State University                       |             |            |            | 204        |                      |          | 11            |           | 215          |
| <b>Subtotal Universities</b>                  | <b>1</b>    |            | <b>4</b>   | <b>854</b> | <b>6</b>             | <b>7</b> | <b>98</b>     | <b>1</b>  | <b>971</b>   |
| <b>Total: Colleges and Universities</b>       | <b>91</b>   | <b>161</b> | <b>583</b> | <b>854</b> | <b>6</b>             | <b>7</b> | <b>98</b>     | <b>1</b>  | <b>1,801</b> |

Source: Minnesota State Colleges and Universities