

GETTING PREPARED

RECENT HIGH SCHOOL GRADUATES AND DEVELOPMENTAL COURSES

2015

MINNESOTA
SLEDS

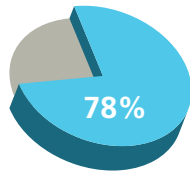
Statewide Longitudinal
Education Data Systems

<http://www.ohe.state.mn.us/>

THE TERM 'COLLEGE' IS USED TO REFERENCE ANY TYPE OF POSTSECONDARY INSTITUTION, INCLUDING BOTH ACADEMIC AND VOCATIONAL TRAINING.

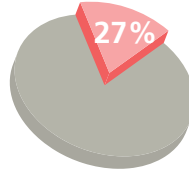
ALL INFORMATION IS FROM THE MINNESOTA PUBLIC HIGH SCHOOL CLASS OF 2012. COLLEGE ENROLLMENT AND DEVELOPMENTAL EDUCATION ACTIVITY ARE WITHIN TWO YEARS OF GRADUATION.

1 78% OF HIGH SCHOOL GRADUATES GO TO COLLEGE.



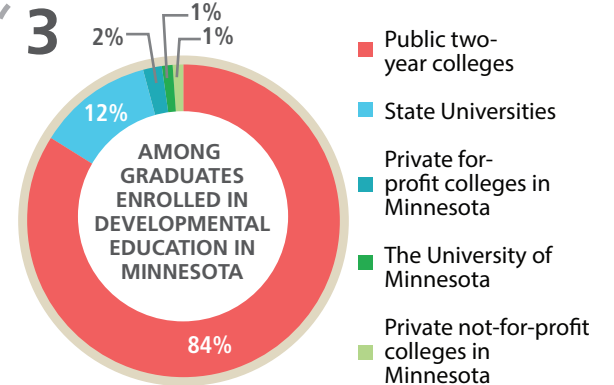
GO TO COLLEGE

2 27% OF HIGH SCHOOL GRADUATES ENROLLED IN ONE OR MORE DEVELOPMENTAL COURSES.



TAKE DEVELOPMENTAL COURSES

3



4 MINNESOTA DOES WELL IN MOVING STUDENTS FROM HIGH SCHOOL TO COLLEGE. HOWEVER, GAPS IN ENROLLMENT EXIST FOR KEY GROUPS OF STUDENTS, INCLUDING STUDENTS OF COLOR AND LOWER INCOME STUDENTS.

5 STUDENTS IN DEVELOPMENTAL EDUCATION PERSISTED IN COLLEGE AT RATES COMPARABLE TO OTHER STUDENTS.

6 COMPLETION RATES FOR DEVELOPMENTAL EDUCATION ENROLLEES HAD SIXTH YEAR COMPLETION RATES RANGING FROM 44 PERCENT AT FOR-PROFIT INSTITUTIONS TO 73 PERCENT AT STATE UNIVERSITIES.

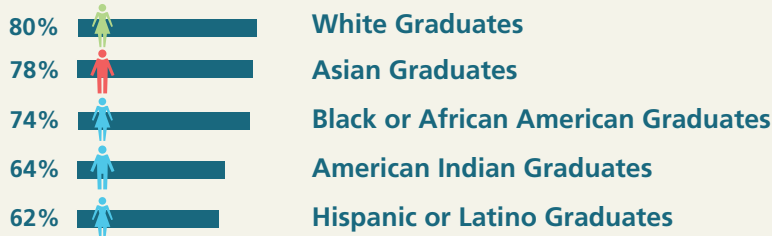


MINNESOTA PUBLIC HIGH SCHOOL GRADUATES

ENROLLING IN COLLEGE

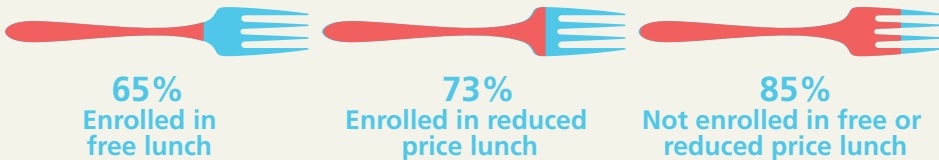
RACE/ETHNICITY

Graduates of color enrolled in college at lower rates than their White peers.



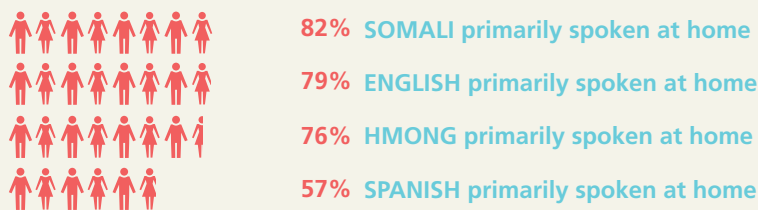
FREE AND REDUCED PRICE LUNCH GRADUATES DURING SENIOR YEAR OF HIGH SCHOOL

Graduates not enrolled in free or reduced price lunch enrolled in college at higher rates.



LANGUAGE SPOKEN AT HOME

Graduates who spoke Somali at home had higher rates of college enrollment than other primary language groups.

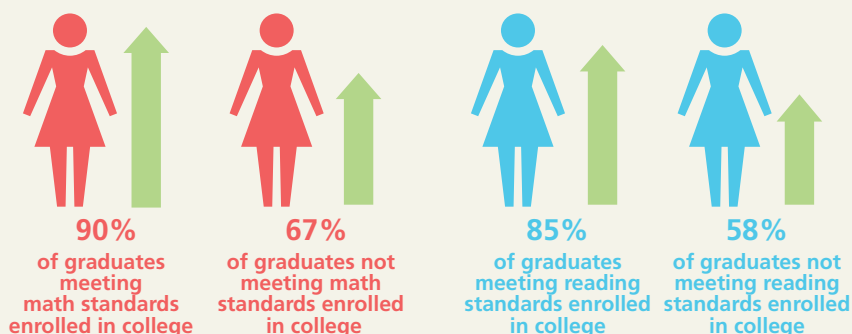


TESTING

High school graduates meeting the standards on statewide accountability tests have higher college enrollment rates.

MATH 11TH GRADE

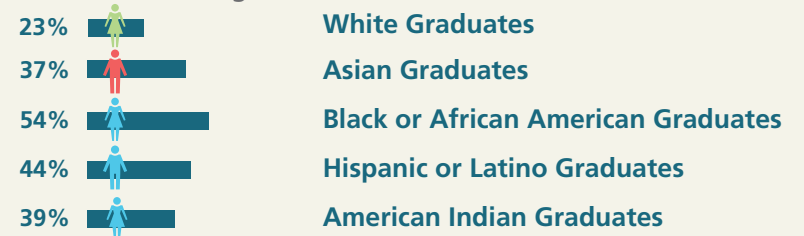
READING 10TH GRADE



DEVELOPMENTAL EDUCATION

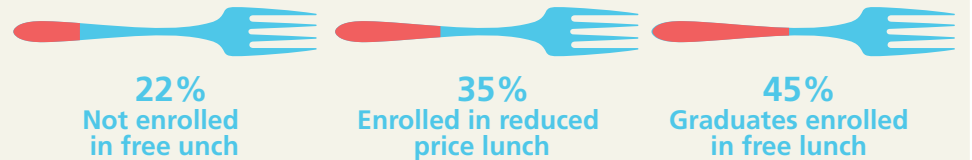
RACE/ETHNICITY

Graduates of color enrolled in developmental education at higher rates than White graduates.



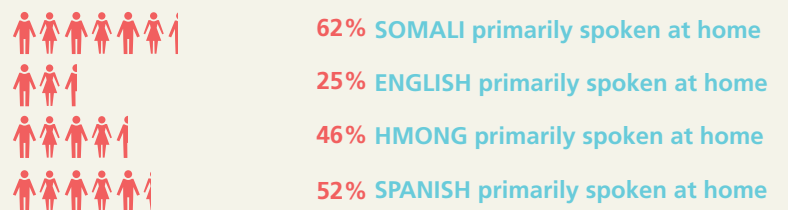
FREE AND REDUCED PRICE LUNCH GRADUATES DURING SENIOR YEAR OF HIGH SCHOOL

Graduates enrolled in free or reduced price lunch enrolled in developmental education at higher rates.



LANGUAGE SPOKEN AT HOME

Graduates whose primary home language was not English enrolled in developmental education at rates higher than English speakers.



TESTING

High school graduates meeting the standards on statewide accountability tests have lower developmental education rates compared to students not meeting the standards.

MATH 11TH GRADE

READING 10TH GRADE

